

NOTE*

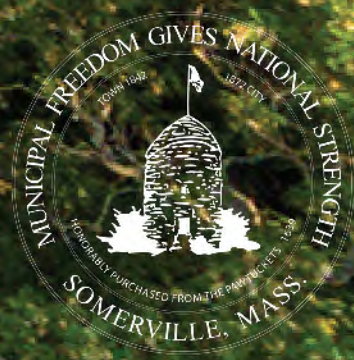
At the last of the 5 community meetings, held on May 23, 2018, it was decided that the staircase to the right of the tower (seen on all of the slides but the second to the last) was a high cost element that was not favored by a majority of the attendees. The final design does not include this treatment, but like other elements, it appears in these slides because it was a discussion point.

Please use these slides to see the development of the community conversations, but refer to the final plan at the top of this website for the final design.

Thank you.

PROSPECT HILL PARK

Image by Eric Kilby



PROSPECT HILL PARK

DESIGN TEAM

Mayor's Office of Strategic Planning & Community Development:

- Luisa Oliveira, ASLA, Senior Planner for Landscape Design
- Sarah White, Preservation & Zoning Planner
- Somerville Historic Preservation Committee

Design Team:

Kyle Zick Landscape Architecture, Inc.

- Kyle Zick, ASLA, Principal-in-Charge
- Danielle Desilets, RLA, Project Manager

Structures North Consulting Engineers, Inc. - Structural engineers

Design Consultants, Inc. - Civil engineers

Sarkisian & Associates, Inc. - Irrigation consultant

Allied Consulting Engineering Services, Inc. - M/E/P engineers

PROSPECT HILL PARK

AGENDA & GOALS

1. Review feedback from Community meeting #3 and Site walk (Community meeting #4)
2. Discuss updates from Historic Preservation Commission
3. Present design
4. Next steps

PROSPECT HILL PARK

PRIORITIES

1. Accessibility
2. Rehabilitate the park (last done in 1982)
3. Historic plan through HPC
4. Interpretation: the story of the site
5. Landscape management
6. Circulation
7. Site lighting

Second tier priorities, if possible:
a. Access to the mid-level terrace

PROSPECT HILL PARK

COMMUNITY FEEDBACK

Site Walk Feedback

- General site concept is good
- Meadow vs. “no mow” grasses
- Clarity on shed
- Site lighting
- Access to mid-level terrace

PROSPECT HILL PARK

COMMUNITY FEEDBACK

Historic Preservation Commission

- Shed cannot be removed; no walkway
- In favor of interpretation as proposed
- In favor of improved lighting
- Guardrail option to be further explored
- 1902 planting plan consistency

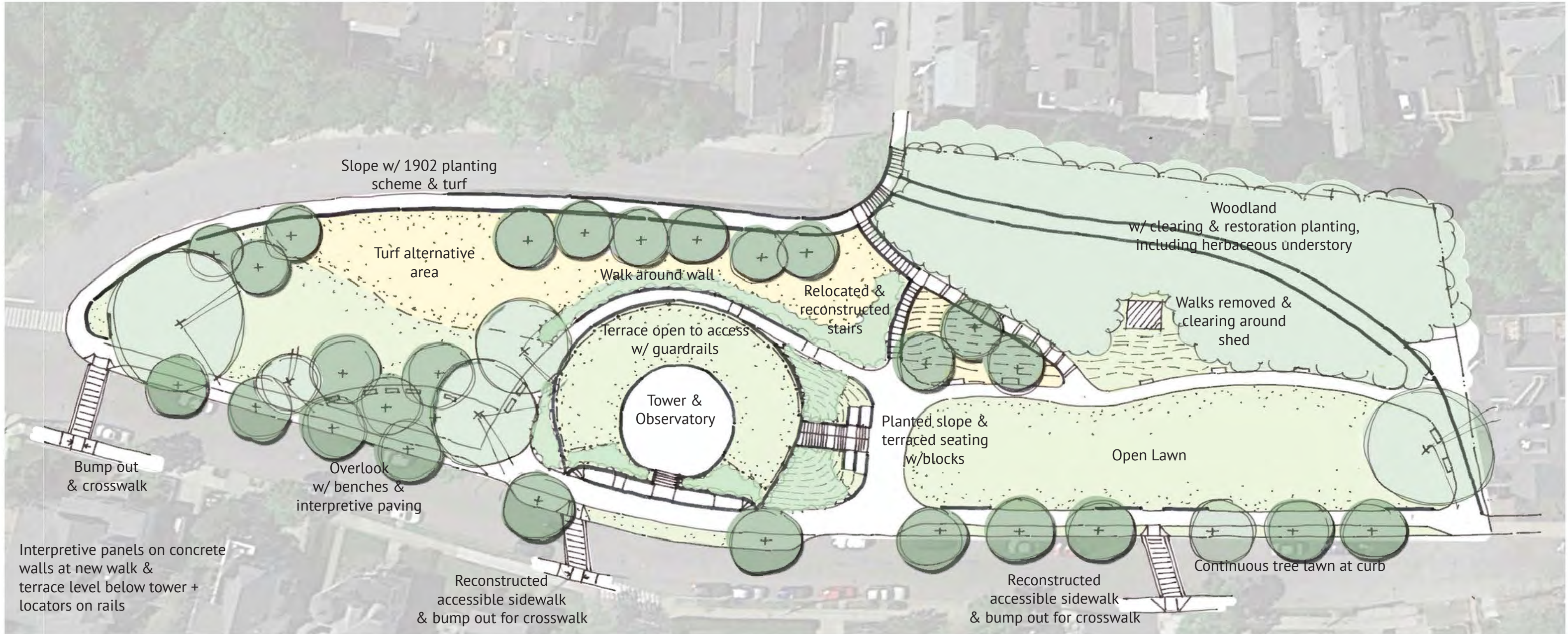
PROSPECT HILL PARK

SITE ORIENTATION



PROSPECT HILL PARK

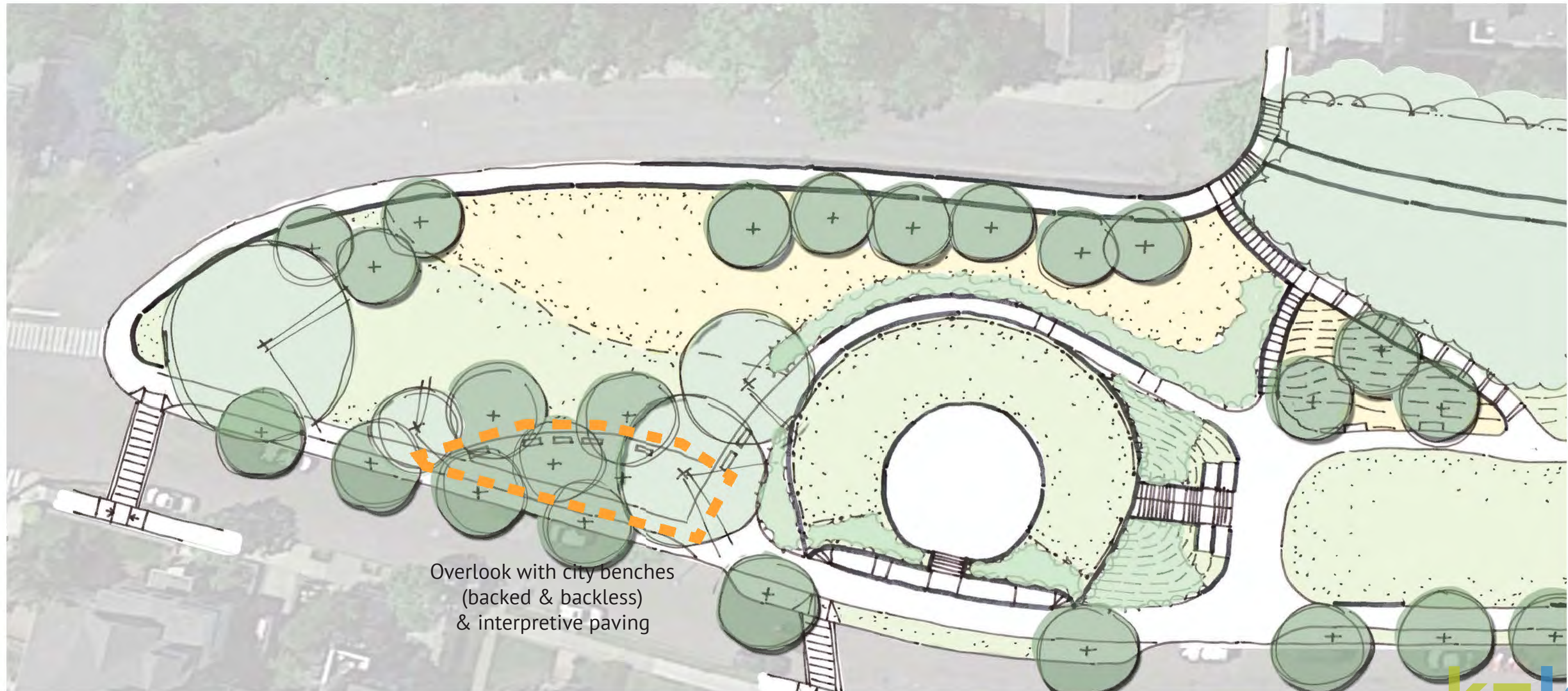
FULL SITE CONCEPT PLAN



PROSPECT HILL PARK

OVERLOOK

- Passive overlook with shade, seating, & interpretation
- Serves as gathering space
- Retains most existing trees
- Adds trees in anticipation of future need



Overlook with city benches
(backed & backless)
& interpretive paving

PROSPECT HILL PARK

OVERLOOK - PROPOSED PLANTINGS



Acer rubrum,
Red maple



Liquidambar styraciflua,
Sweetgum



Cornus amomum,
Silky dogwood



Symphoricarpos orbiculatus,
Coralberry

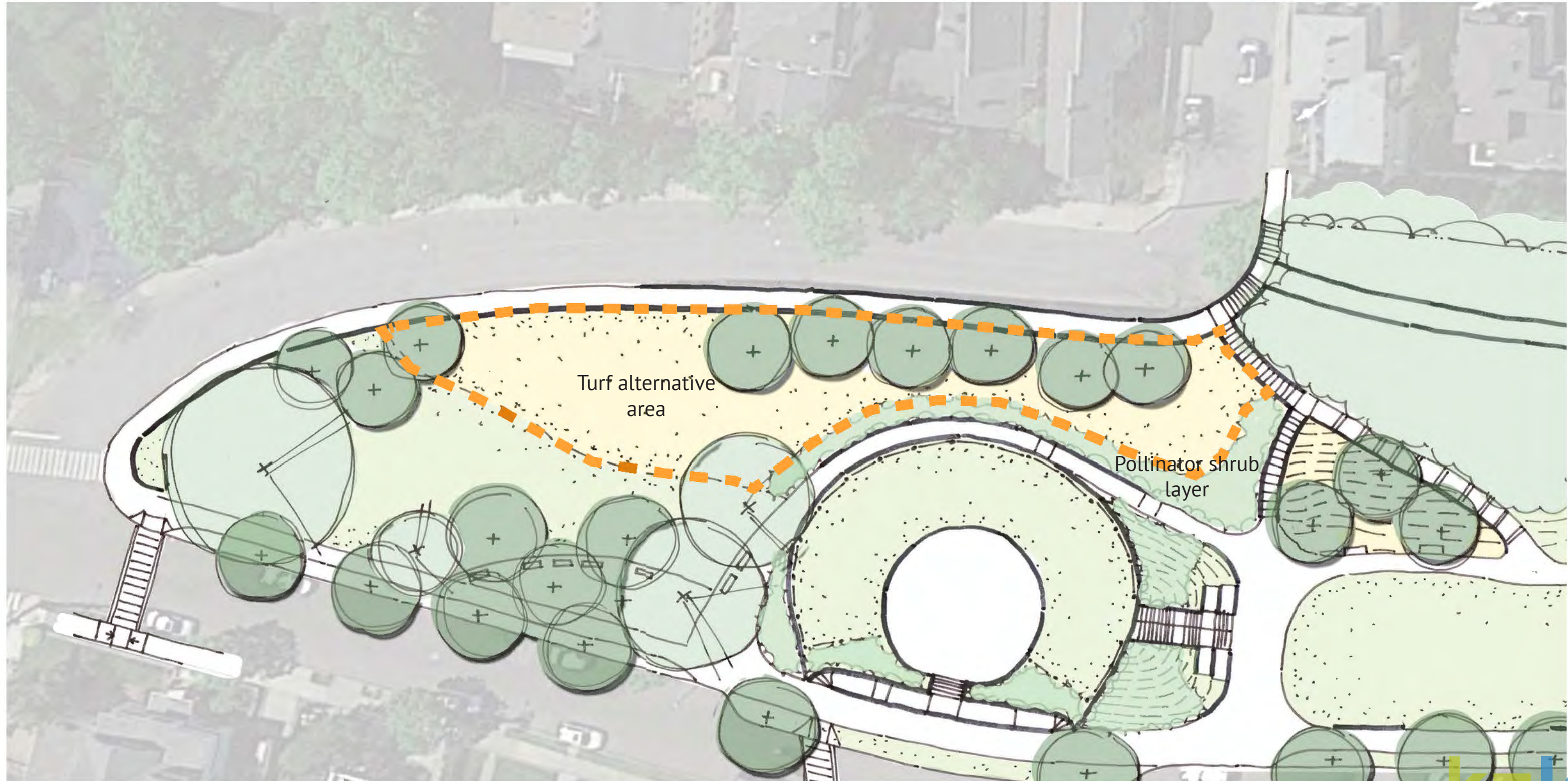


Physocarpus opulifolius,
Ninebark

PROSPECT HILL PARK

SLOPE

- 1902-inspired planting
- “No mow” fescue mix or meadow mix



PROSPECT HILL PARK

SLOPE - PROPOSED PLANTINGS



Crataegus crus-galli,
Cockspur hawthorn



Carpinus caroliniana,
American hornbeam



Clethra alnifolia,
Sweet pepperbush



Viburnum dentatum,
Arrowwood



Hamamelis virginiana,
Witchhazel

PROSPECT HILL PARK

SLOPE - TURF ALTERNATIVES



Meadow-like planting



"No mow" fescue blend

PROSPECT HILL PARK

WALKWAY AROUND TOWER



MID-LEVEL OF TERRACE

EXISTING CONCRETE
RETAINING WALL

WALKWAY WITH
INTERPRETIVE PANELS

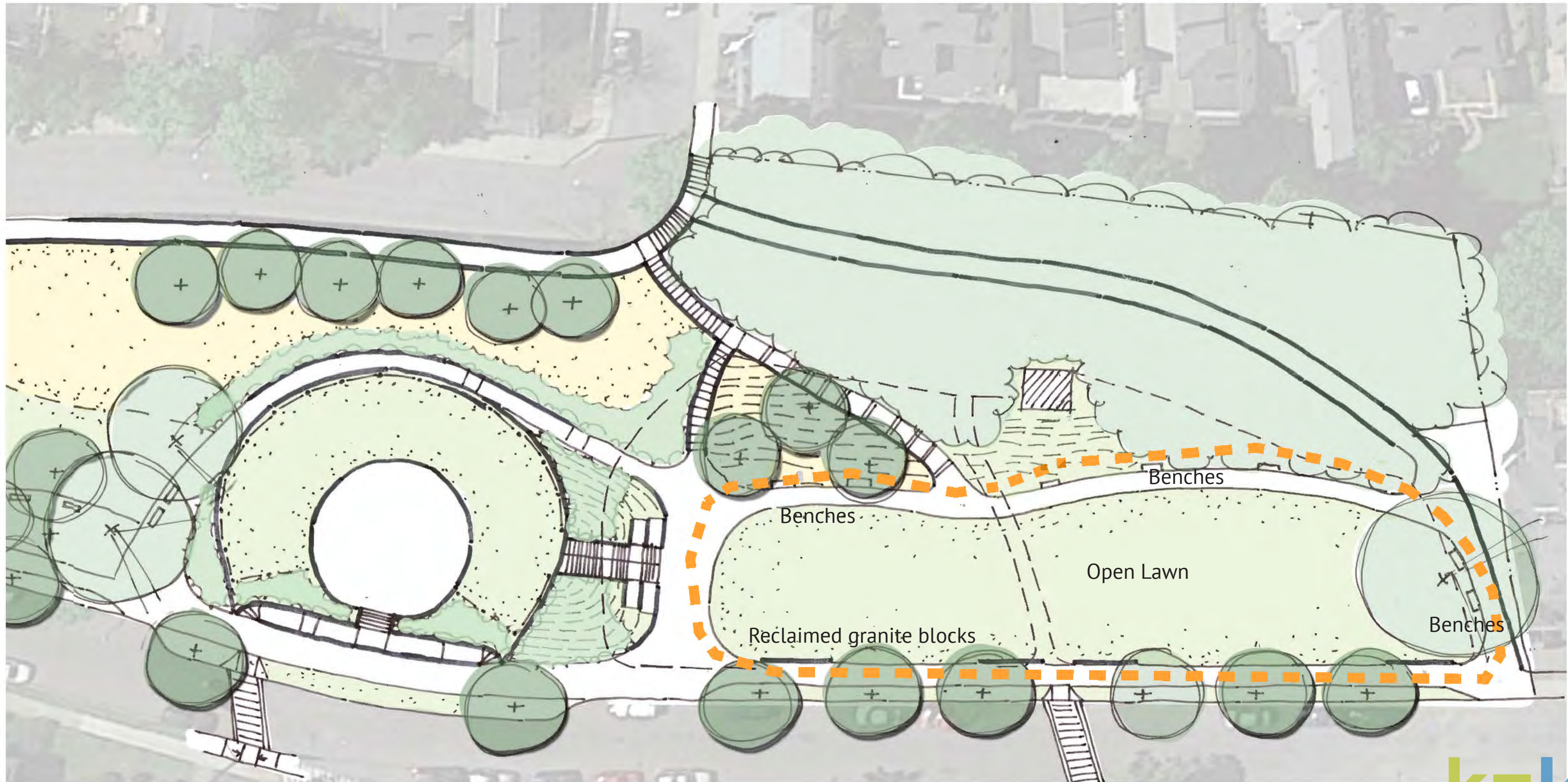


TURF ALTERNATIVE,
1902-INSPIRED PLANTING
& POLLINATOR SHRUBS

PROSPECT HILL PARK

LAWN

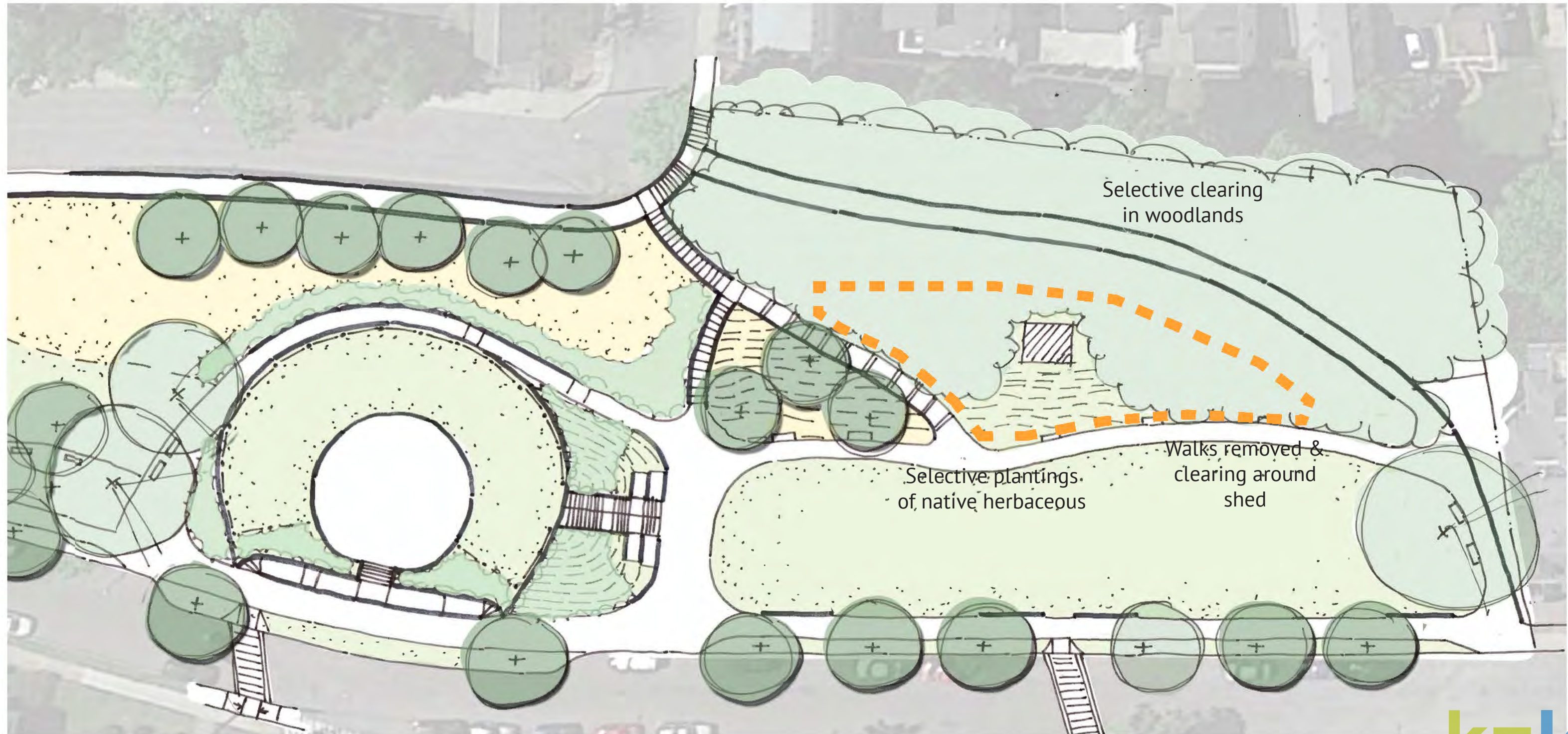
- Improve soil structure & health
- Add irrigation system



PROSPECT HILL PARK

WOODLAND

- Removal of walkways around shed
- Restoration of woodland with herbaceous understory
- Selective clearing and pruning for views and woodland health



PROSPECT HILL PARK

WOODLAND - PROPOSED PLANTINGS



Quercus rubra,
Red oak



Liriodendron tulipifera,
Tulip tree



Catalpa speciosa,
Catalpa

EXAMPLE WOODLAND HERBACEOUS GROUNDCOVERS:



Tiarella cordifolia, Foam flower



Eurybia divaricata, Wood aster



Galium odoratum, Sweetscented bedstraw

PROSPECT HILL PARK

STREET TREES AND SIDEWALK IMPROVEMENTS





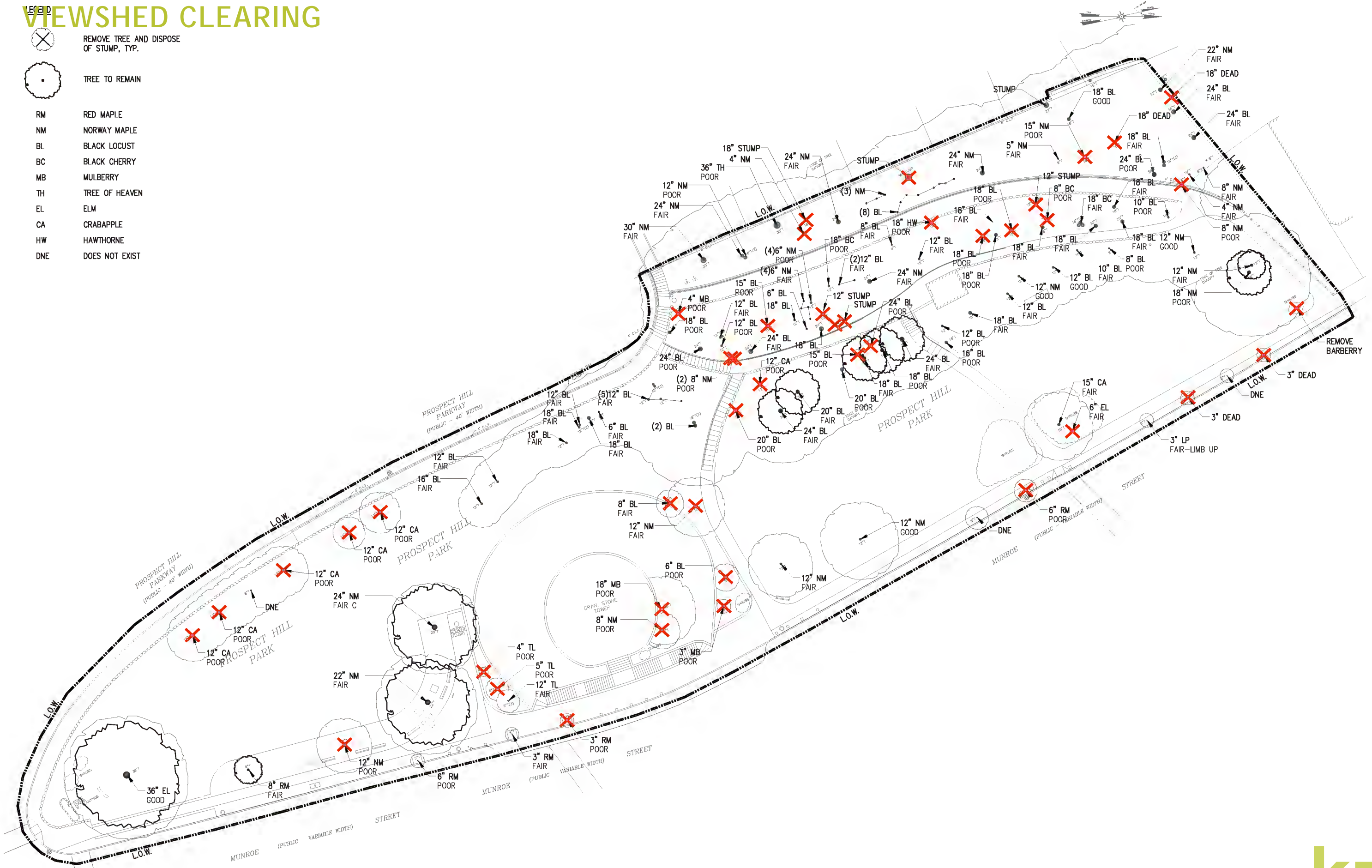
- Additional trees for shade in expanded tree lawn to promote tree health
- Wider sidewalks for improved mobility



PROSPECT HILL PARK

VIEWSHED CLEARING

- LEGEND**
-  REMOVE TREE AND DISPOSE OF STUMP, TYP.
 -  TREE TO REMAIN
 - RM RED MAPLE
 - NM NORWAY MAPLE
 - BL BLACK LOCUST
 - BC BLACK CHERRY
 - MB MULBERRY
 - TH TREE OF HEAVEN
 - EL ELM
 - CA CRABAPPLE
 - HW HAWTHORNE
 - DNE DOES NOT EXIST



PROSPECT HILL PARK

VIEWSHED CLEARING



View of Cambridge skyline



View down Prospect Hill Parkway

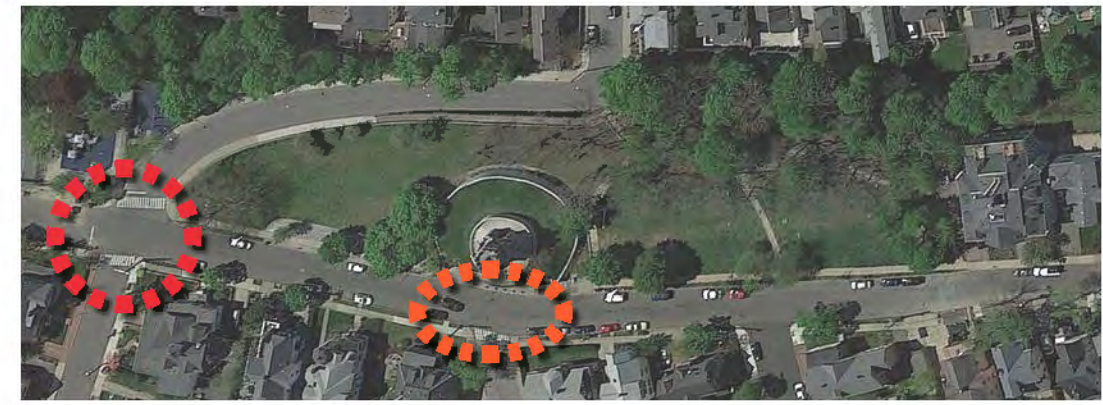


View of Boston skyline

PROSPECT HILL PARK

TRAFFIC IMPROVEMENTS

- Curb extensions and pinchpoints for slowing vehicular speeds and shrinking pedestrian crossing distances
- Addition of crosswalks

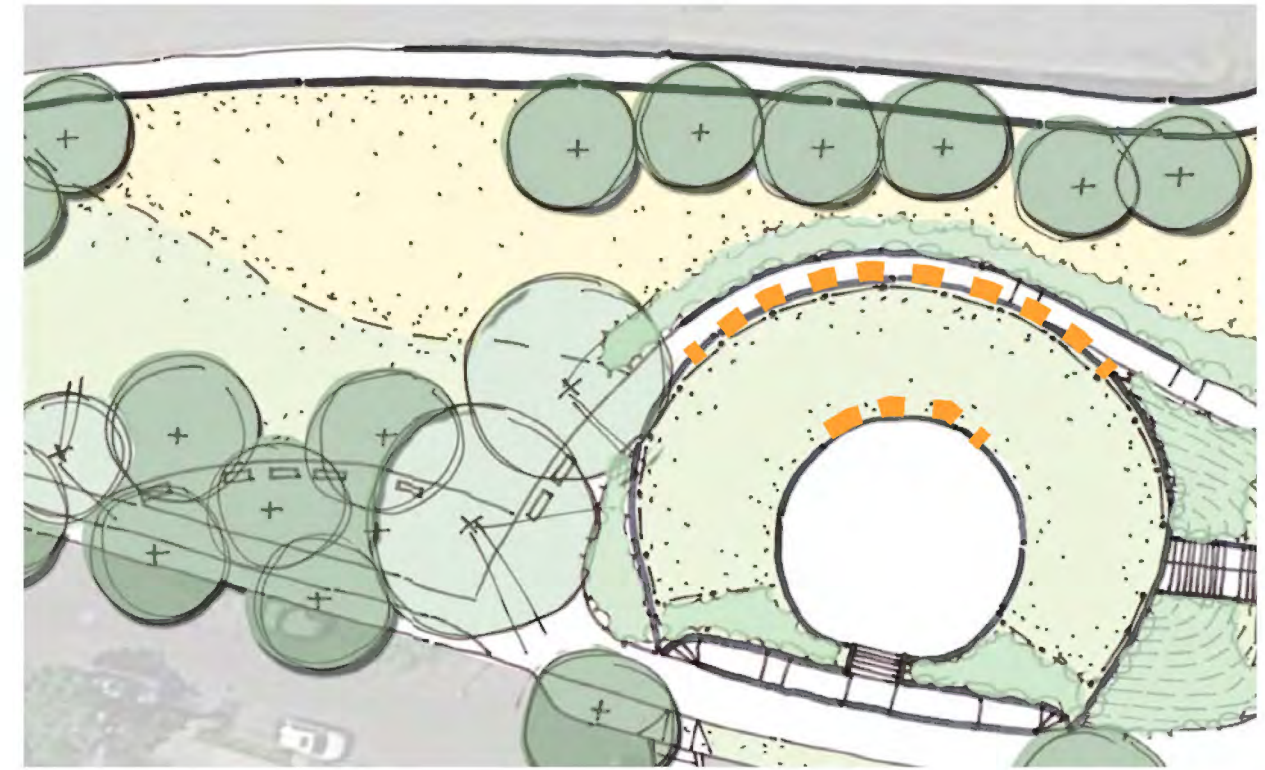


PROSPECT HILL PARK

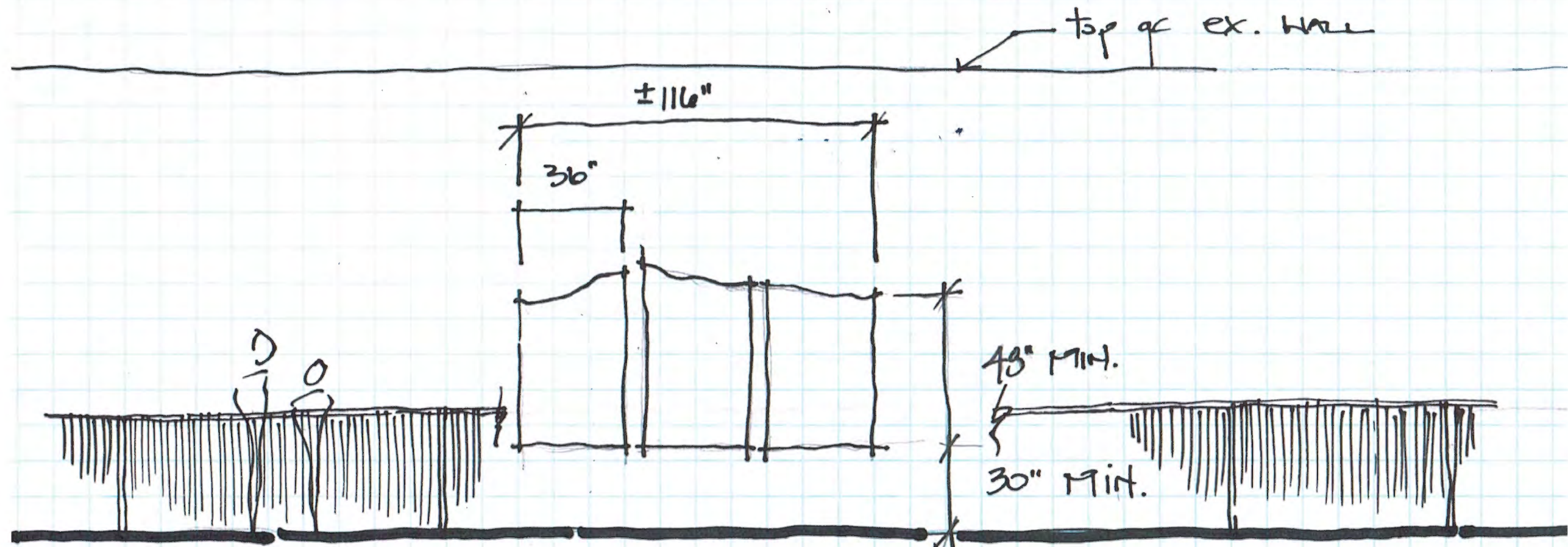
HISTORIC INTERPRETATION

Interpretive panels mounted on concrete walls:

- 7 to 9 wall panels about the Siege of Boston
- Organized by key locations or by date
- Each one will tie into Prospect Hill's role
- Locator on guardrail to identify location of other sites



Elevation at panels at new walkway around tower walls



PROSPECT HILL PARK

HISTORIC INTERPRETATION

Interpretive panels mounted on concrete walls:

- Etched stainless steel or zinc plates



June 17, 1775

The Battle of Bunker Hill

Despite its name, the Battle of Bunker Hill mainly took place on the smaller Breed's Hill. Both hills were located on the Charlestown peninsula but Breed's was closer to Boston by overland routes.

Knowing that the British troops were planning on taking control of all the hills surrounding the city of Boston (which they were already occupying), some 1,000 Colonial militiamen from Massachusetts and Connecticut built fortifications on Breed's and Bunker Hills on June 16th. Cannons mounted on the fortifications they constructed during the night could reach the "regulars" in North End of Boston.

The following morning, approximately 2,400 British troops crossed the Charles River in three waves of attacks. The 1,400 to 1,800 militiamen held strong in their fortification until they ran out of gunpowder and were forced to retreat. While the British are considered the victors of this early battle of the Revolutionary War, they incurred substantially more casualties. The death of General Joseph Warren during the battle was a significant blow to the revolutionaries in Boston.

Immediately after the Battle of Bunker Hill, the fortifications of Prospect Hill were completed under the order of Major General Israel Putnam. This battle showed the British that the relatively inexperienced militia would be worthy opponent and quelling the rebellion would not be as simple as expected.



Boston, its environs and harbour, with the rebel works raised against that town in 1775: from the observations of Lieut. Page of his majesty's Corps of Engineers, and from the plans of Capt. Montross. Courtesy of the Boston Public Library, Norman B. Leventhal Map Center Collection.

Sample interpretive panel

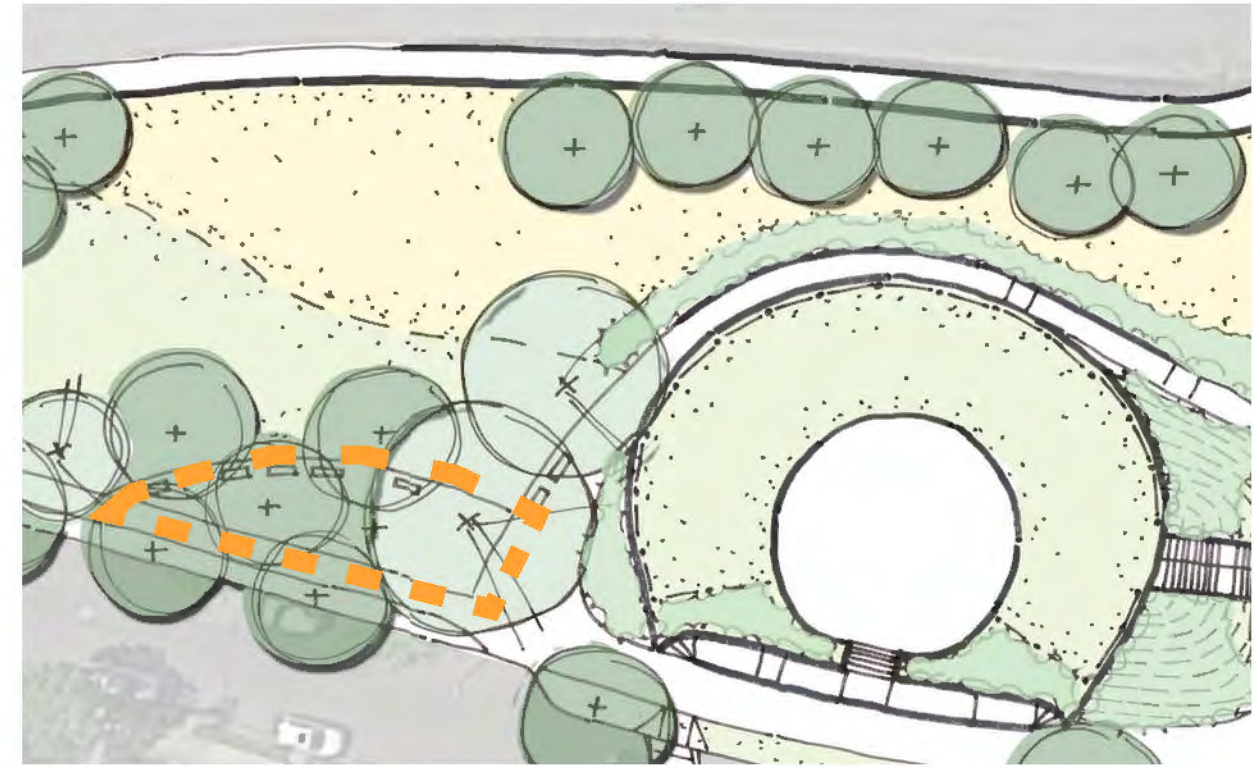
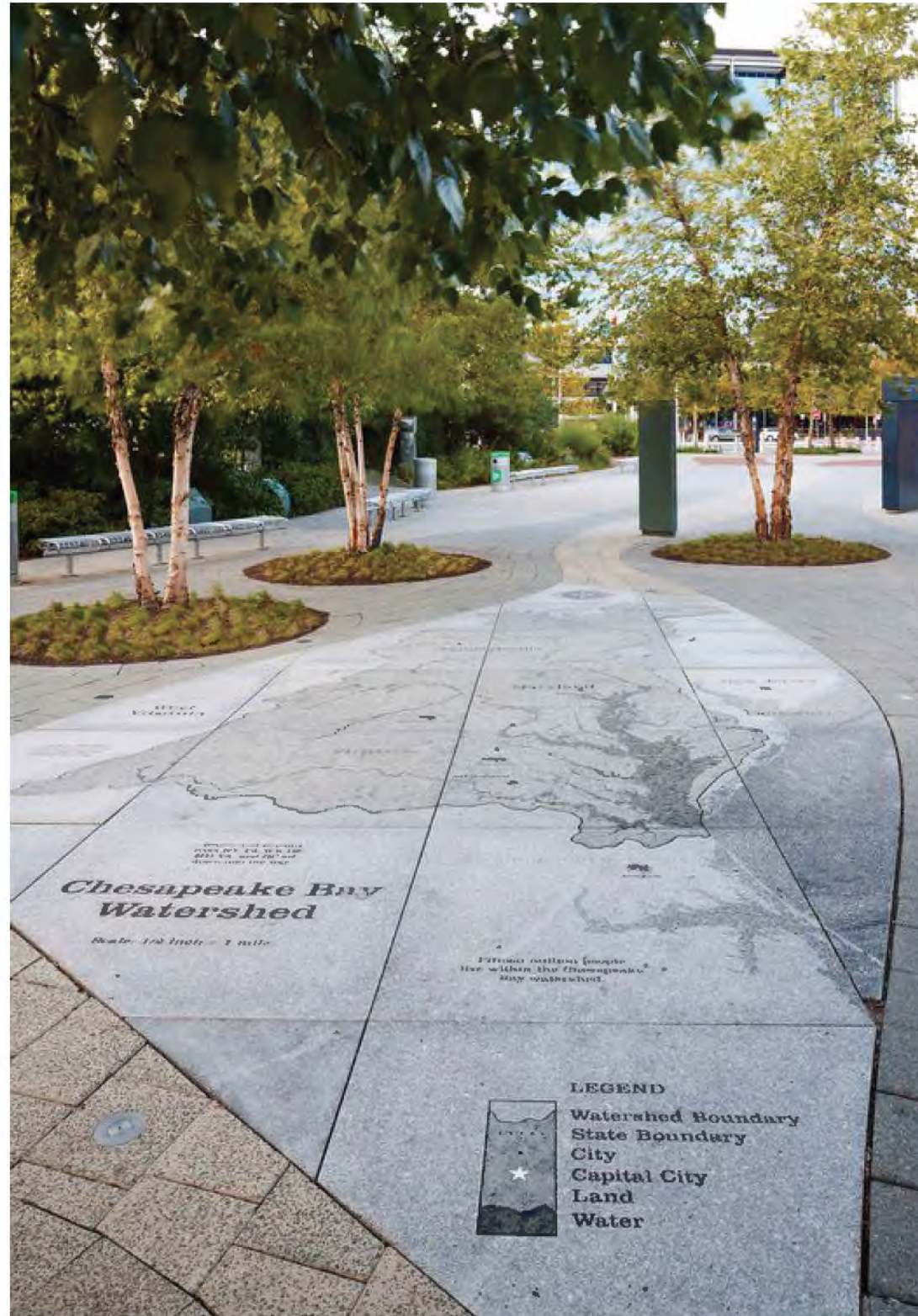


PROSPECT HILL PARK

HISTORIC INTERPRETATION

Mapping in overlook

- Fortifications important to the Siege of Boston



PROSPECT HILL PARK

SITE LIGHTING



Existing site lighting



City standard light fixtures



PROSPECT HILL PARK

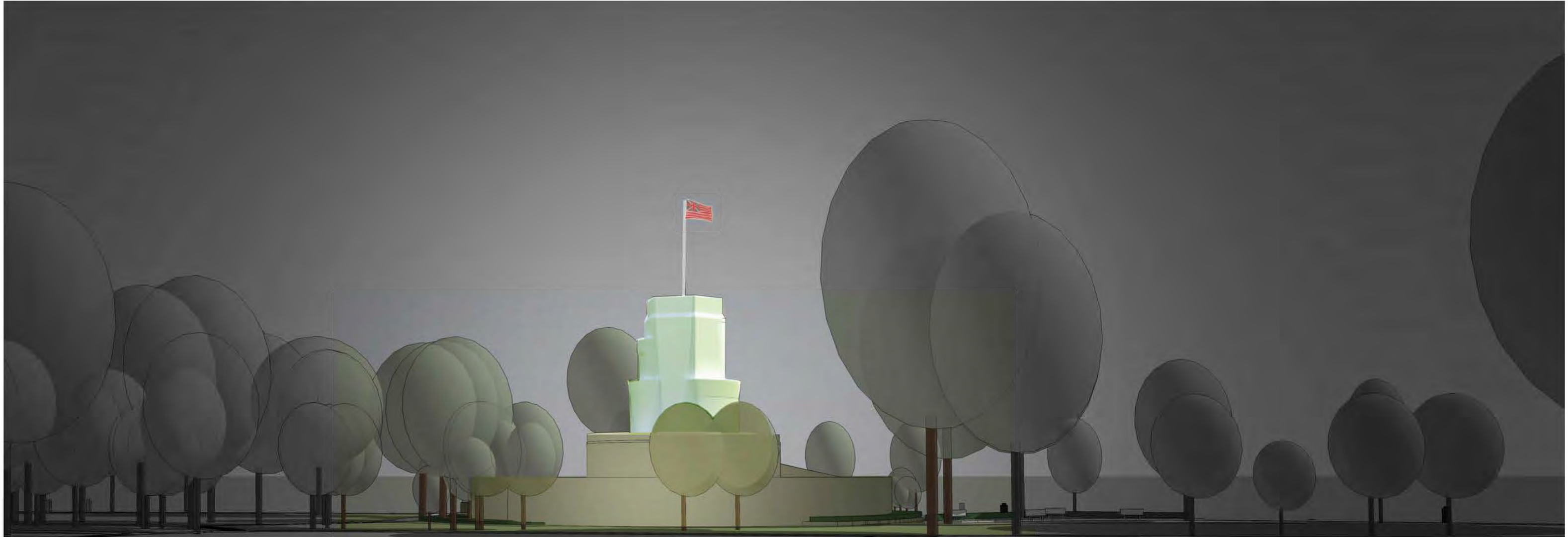
SITE LIGHTING



Proposed site lighting

PROSPECT HILL PARK

SITE LIGHTING



Proposed lighting on Tower & Grand Union Flag

PROSPECT HILL PARK

SITE AMENITIES: CITY STANDARDS



PROSPECT HILL PARK

TERRACE ACCESS



PROSPECT HILL PARK

TERRACE ACCESS

- Reclaimed granite seating blocks
- Granite stairs to mid-level terrace
- Sloped lawn



MID-LEVEL
TERRACE

PROPOSED STAIRS FROM
WALKWAY TO TERRACE

SEATWALLS WITH RECLAIMED
GRANITE BLOCKS

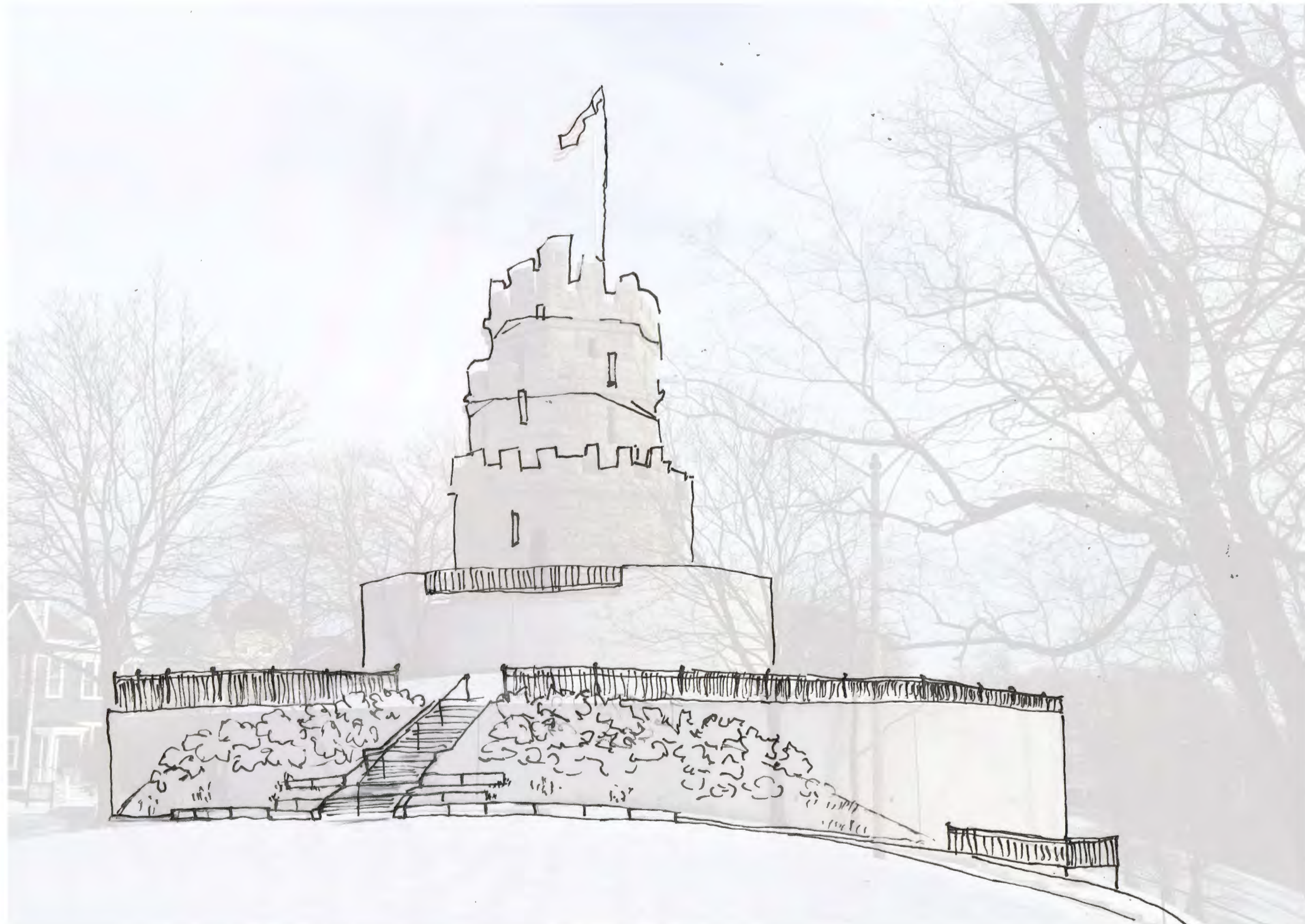
WIDE WALKWAY

EXISTING LAWN
WITH TREES IN WOODLAND



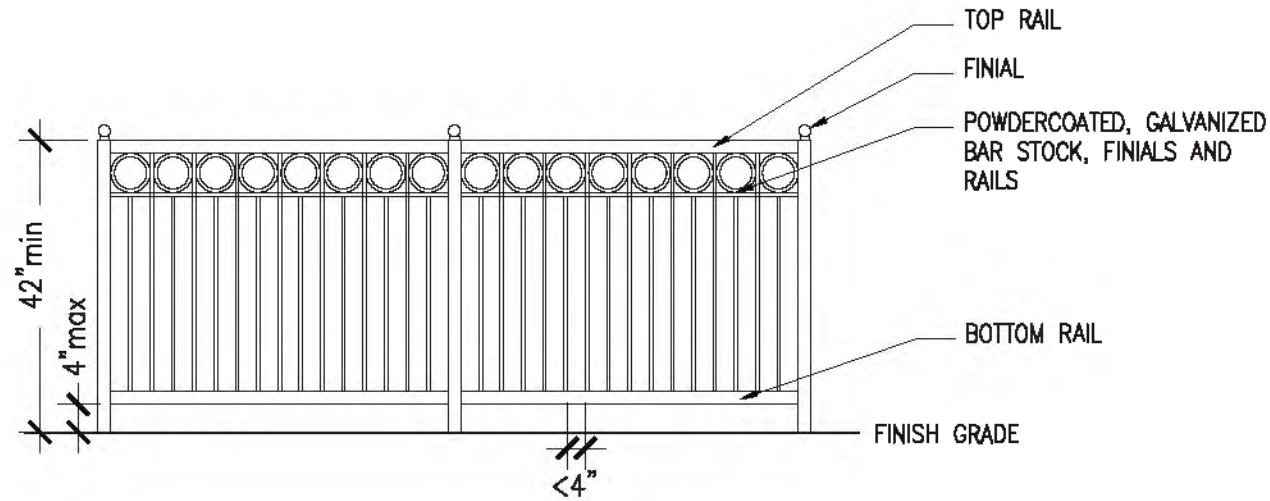
PROSPECT HILL PARK

TERRACE ACCESS

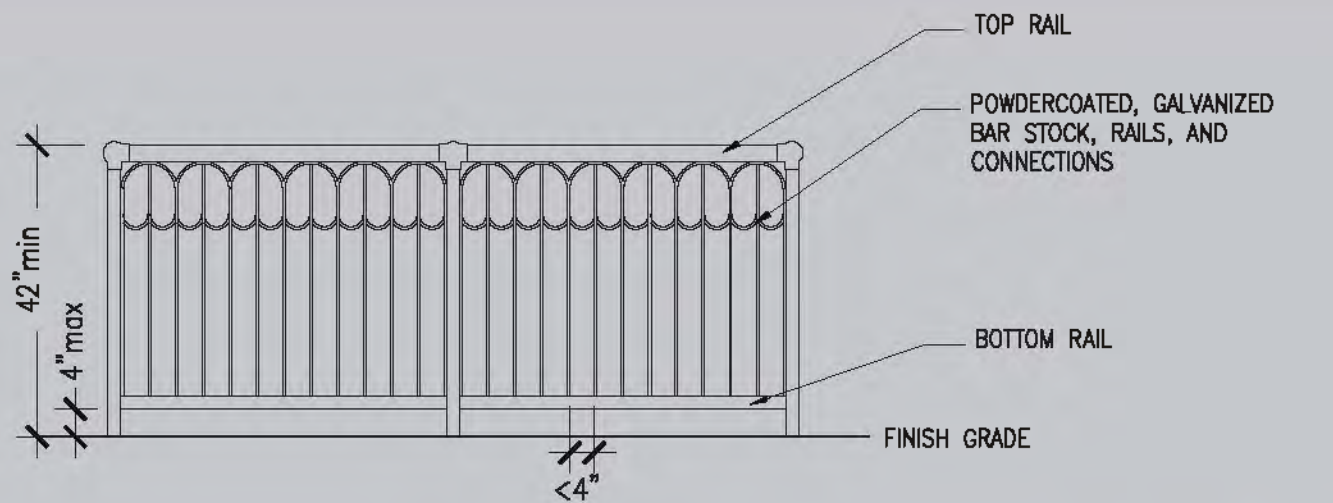


PROSPECT HILL PARK

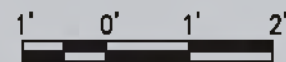
TERRACE ACCESS



1982 Guardrail



Historic-inspired Prospect Hill Parkway guardrail



PROSPECT HILL PARK

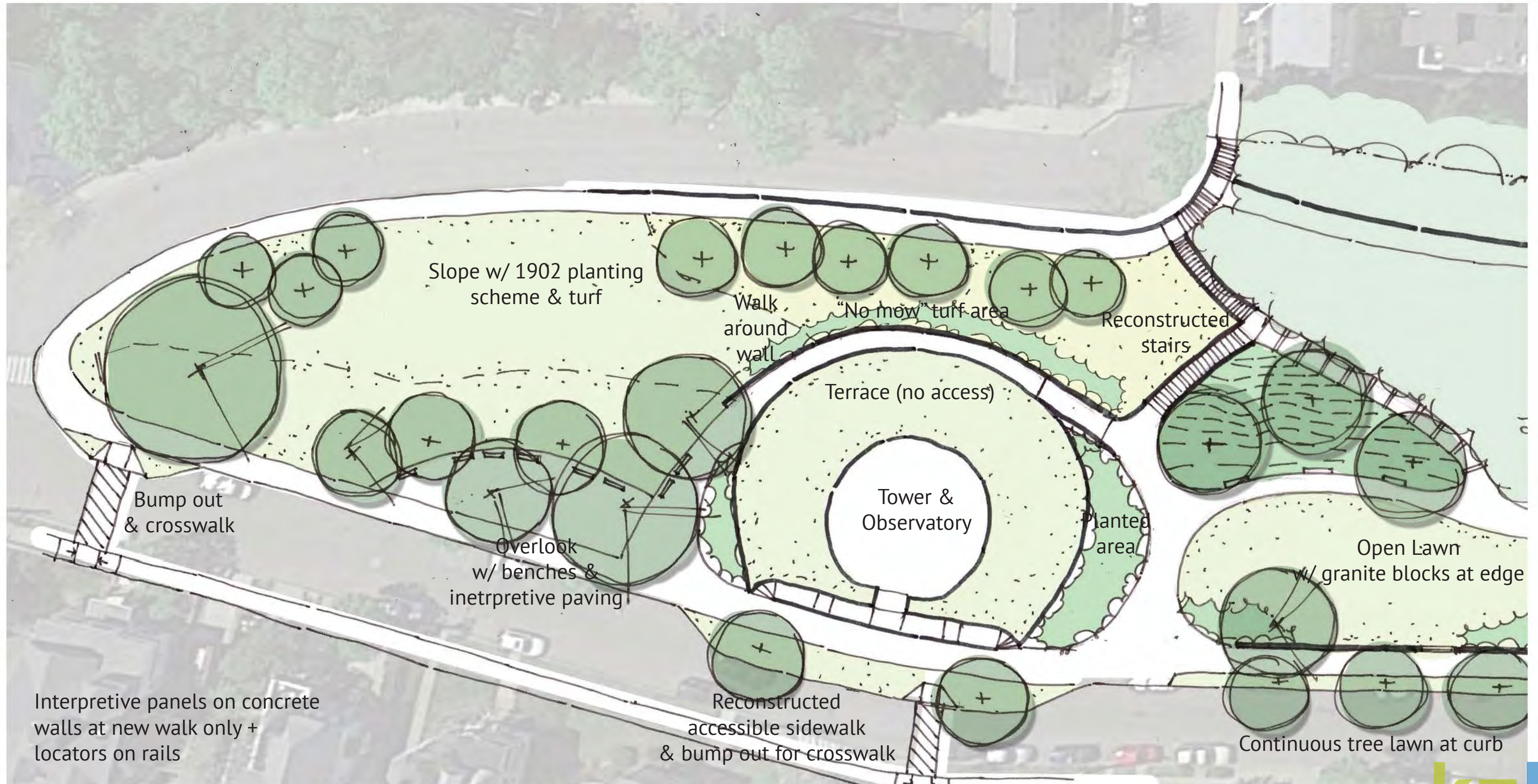
TERRACE ACCESS



Sample interpretive panel

PROSPECT HILL PARK

NO ACCESS



PROSPECT HILL PARK PROJECT TIMELINE

NOVEMBER 2017

- COMMUNITY MEETING #2
- SCHEMATIC DESIGN
- HISTORIC PRESERVATION COMMITTEE

DECEMBER

- COMMUNITY MEETING #3
- HISTORIC PRESERVATION COMMITTEE
- DESIGN DEVELOPMENT

JANUARY 2018

- HISTORIC PRESERVATION COMMITTEE
- COMMUNITY PRESERVATION COMMITTEE
- SITE WALK (MEETING #4)
- COMMUNITY MEETING #5
- CONSTRUCTION DOCUMENTATION

FEBRUARY

- CONSTRUCTION DOCUMENTATION, CONT.

MARCH

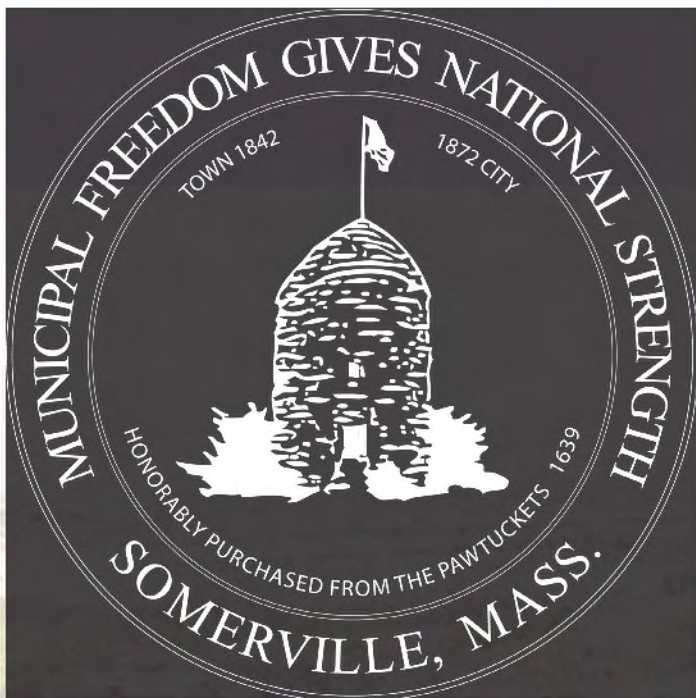
- ADVERTISE FOR CONSTRUCTION BID

APRIL

MAY

JUNE

- CONSTRUCTION BEGINS APPROX. JUNE 1,
LIKELY THROUGH SPRING 2019



Contact:

Luisa Oliveira, Project Manager
LOliveira@somervillema.gov
(617) 625-6600, ext 2529

Project updates:

[HTTPS://WWW.SOMERVILLEMA.GOV/PROSPECTHILLPARK](https://www.somervillema.gov/prospecthillpark)