

PROSPECT HILL PARK

Image by Eric Kilby



PROSPECT HILL PARK

DESIGN TEAM

Mayor's Office of Strategic Planning & Community Development:

- Luisa Oliveira, ASLA, Senior Planner for Landscape Design
- Sarah White, Preservation & Zoning Planner
- Somerville Historic Preservation Committee

Design Team:

Kyle Zick Landscape Architecture, Inc.

- Kyle Zick, ASLA, Principal-in-Charge
- Danielle Desilets, RLA, Project Manager

Structures North Consulting Engineers, Inc. - Structural engineers

Design Consultants, Inc. - Civil engineers

Sarkisian & Associates, Inc. - Irrigation consultant

Allied Consulting Engineering Services, Inc. - M/E/P engineers

PROSPECT HILL PARK

AGENDA & GOALS

1. Review feedback from Community Meeting #2 and on-line survey
2. Discuss design alternatives for park components and overall park
3. Understand next steps

PROSPECT HILL PARK

COMMUNITY MEETING #2 & ONLINE SURVEY FEEDBACK

Feedback from meeting #2:

community
hill
lights
plantings
street
walls
wooded
several
slope
tower
trees
turf
wedges

accommodate behavior boston calming city climb
crosswalk ecosystem experience gets graffiti group hang
issue landscape lit mowed native ospcd path
people possible project
prospect restore retaining shed space square stairs
summer traffic union urban
viewshed weddings

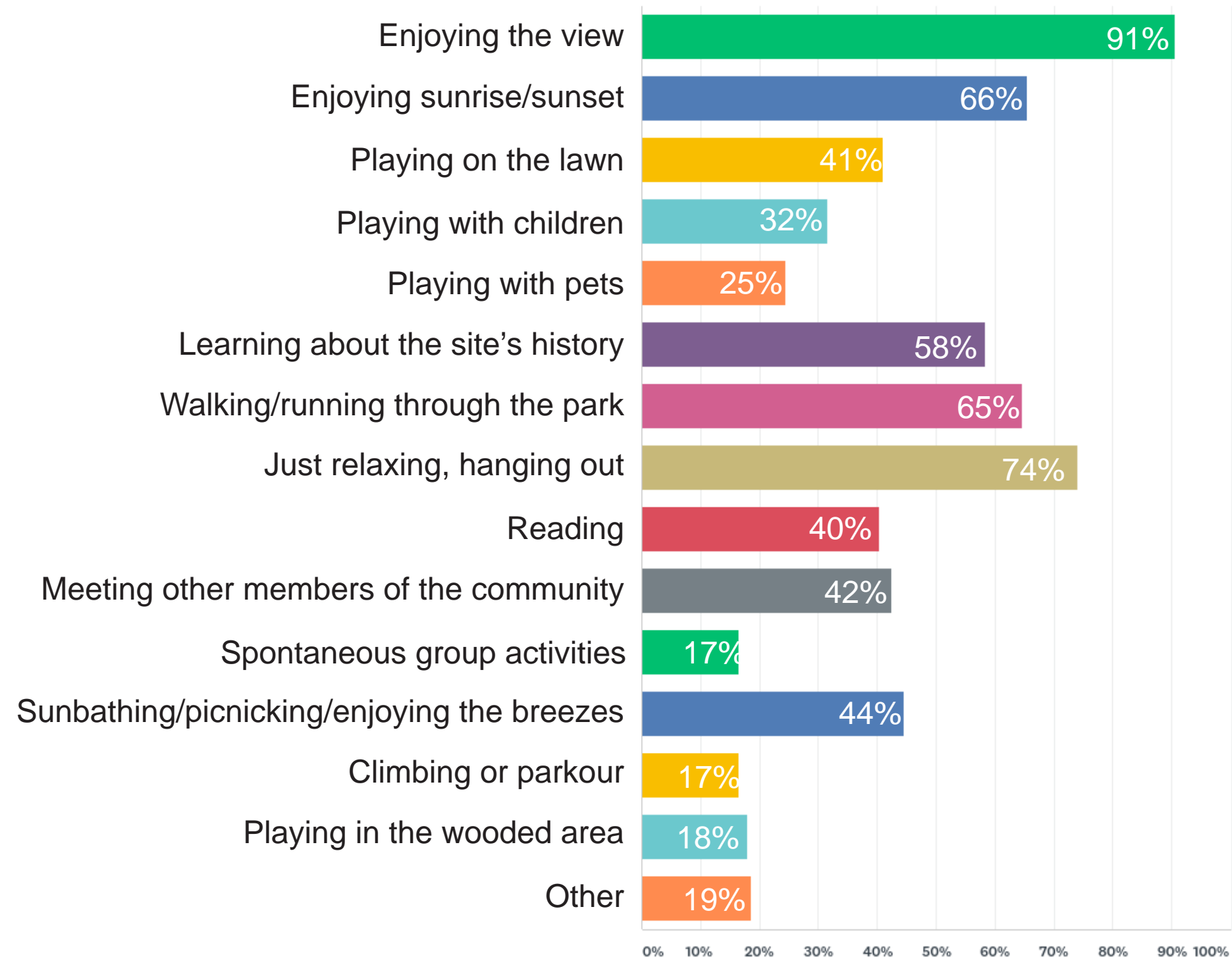
PROSPECT HILL PARK

COMMUNITY MEETING #2 & ONLINE SURVEY FEEDBACK

Survey feedback

- What is your favorite thing about the park?
- What activities have you participated in at PHP?
- Are there problems in the park that we should be aware of?
- What are your most pressing concerns related to traffic near Prospect Hill Park?
- Would you be in favor of up-lighting the tower with different colored lights?

5. What activities have you participated in at PHP?



PROSPECT HILL PARK

SURVEY FEEDBACK

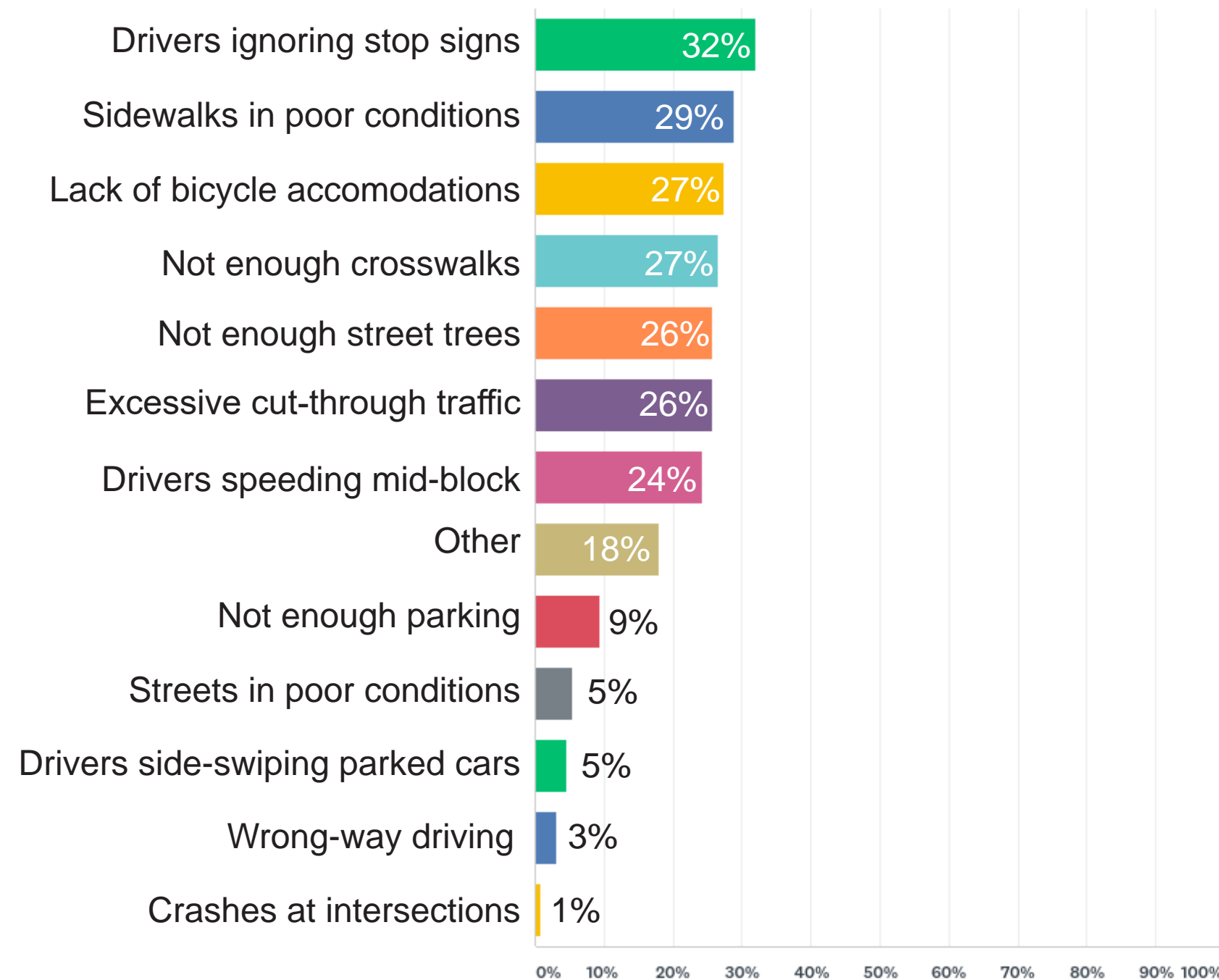
8. Are there problems in the park that we should be aware of?

building deals **dogs** drug **lighting** litter noise
retaining **safety** scary smell **steps** stone **trash**
trees ugly wall

PROSPECT HILL PARK

SURVEY FEEDBACK

9. What are your most pressing concerns related to traffic near Prospect Hill Park?



PROSPECT HILL PARK

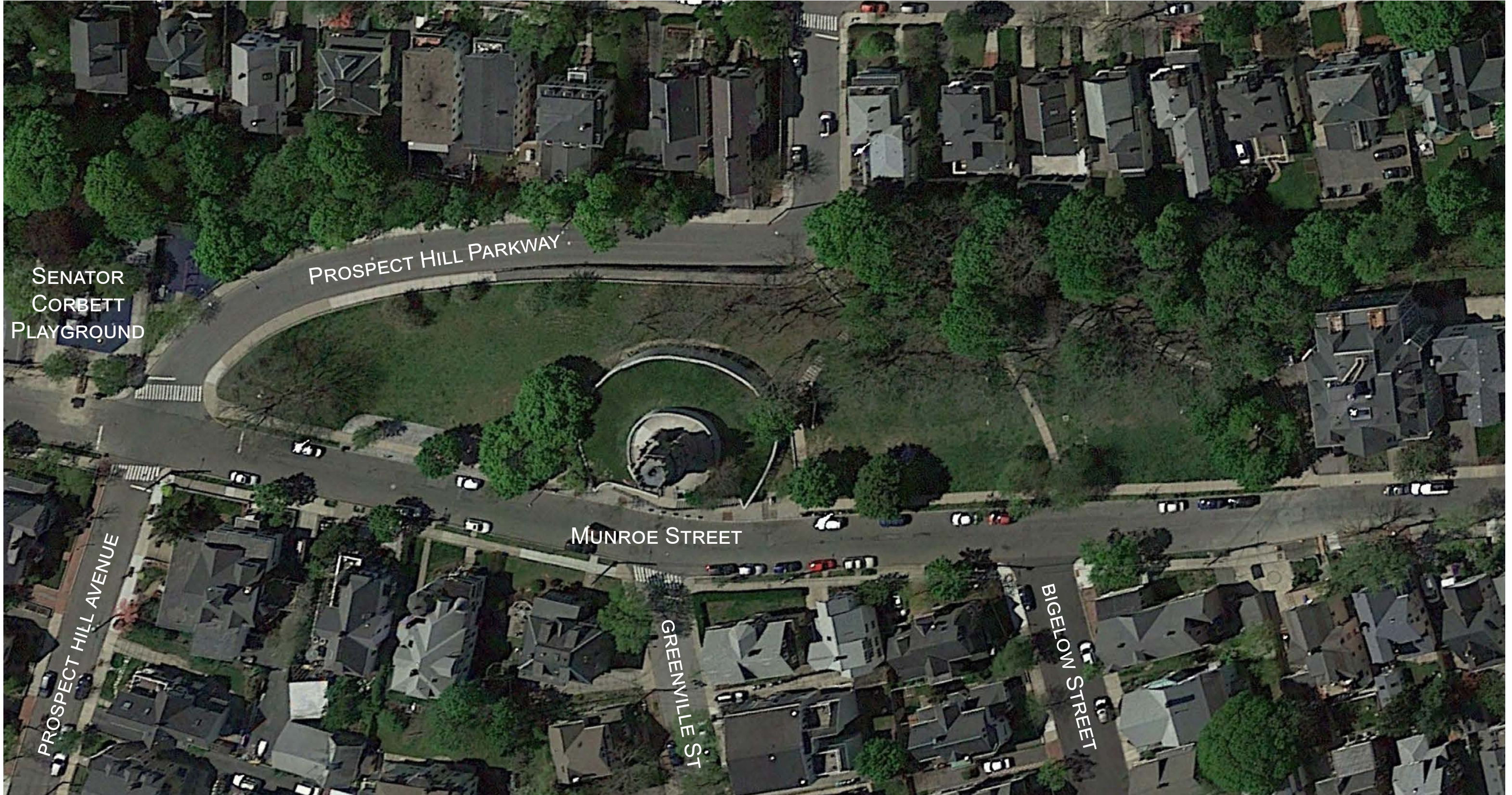
SURVEY FEEDBACK

Summary

- Views, green space & site's history are important to the park
- Safety improvements needed: lighting & stairs, especially
- Access to the park is a challenge
- Plantings are an important aspect of the park's character

PROSPECT HILL PARK

SITE USES



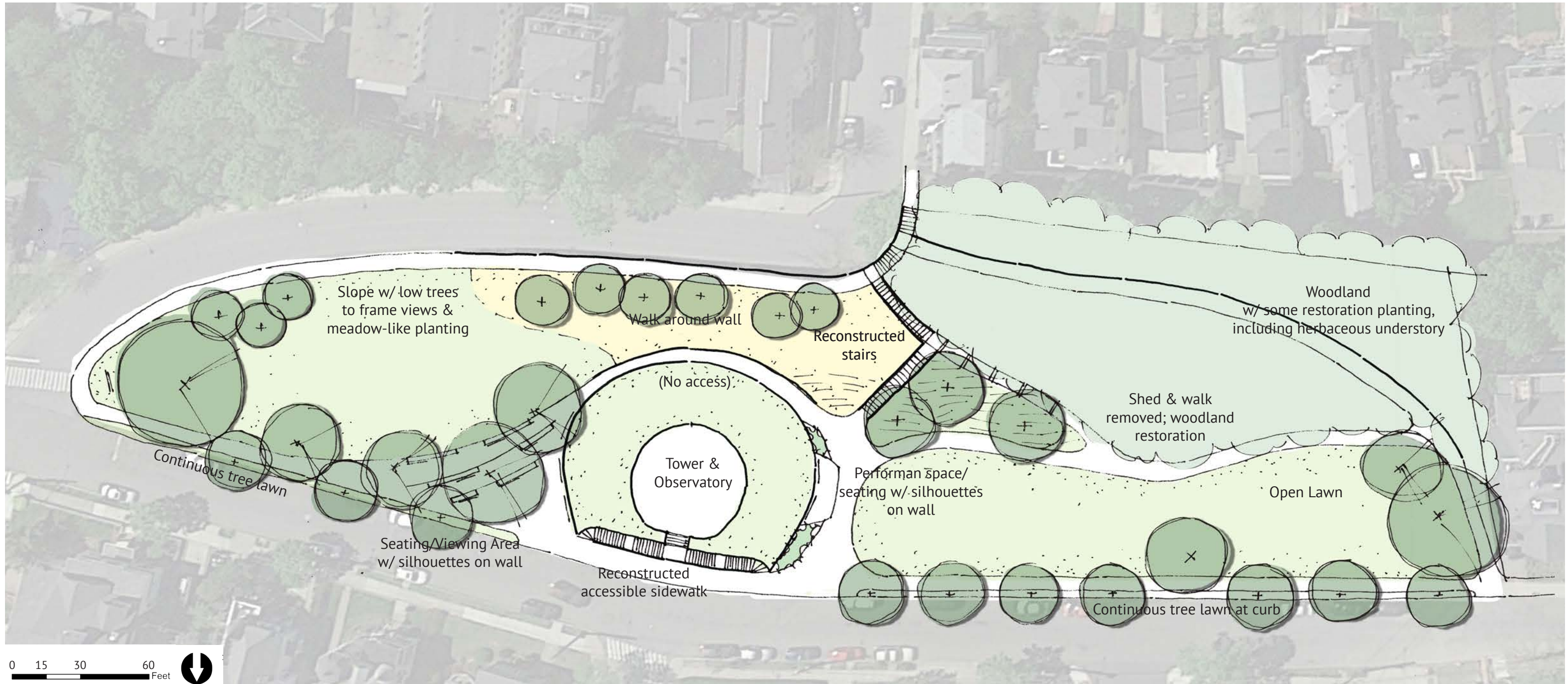
PROSPECT HILL PARK

SITE USES



PROSPECT HILL PARK

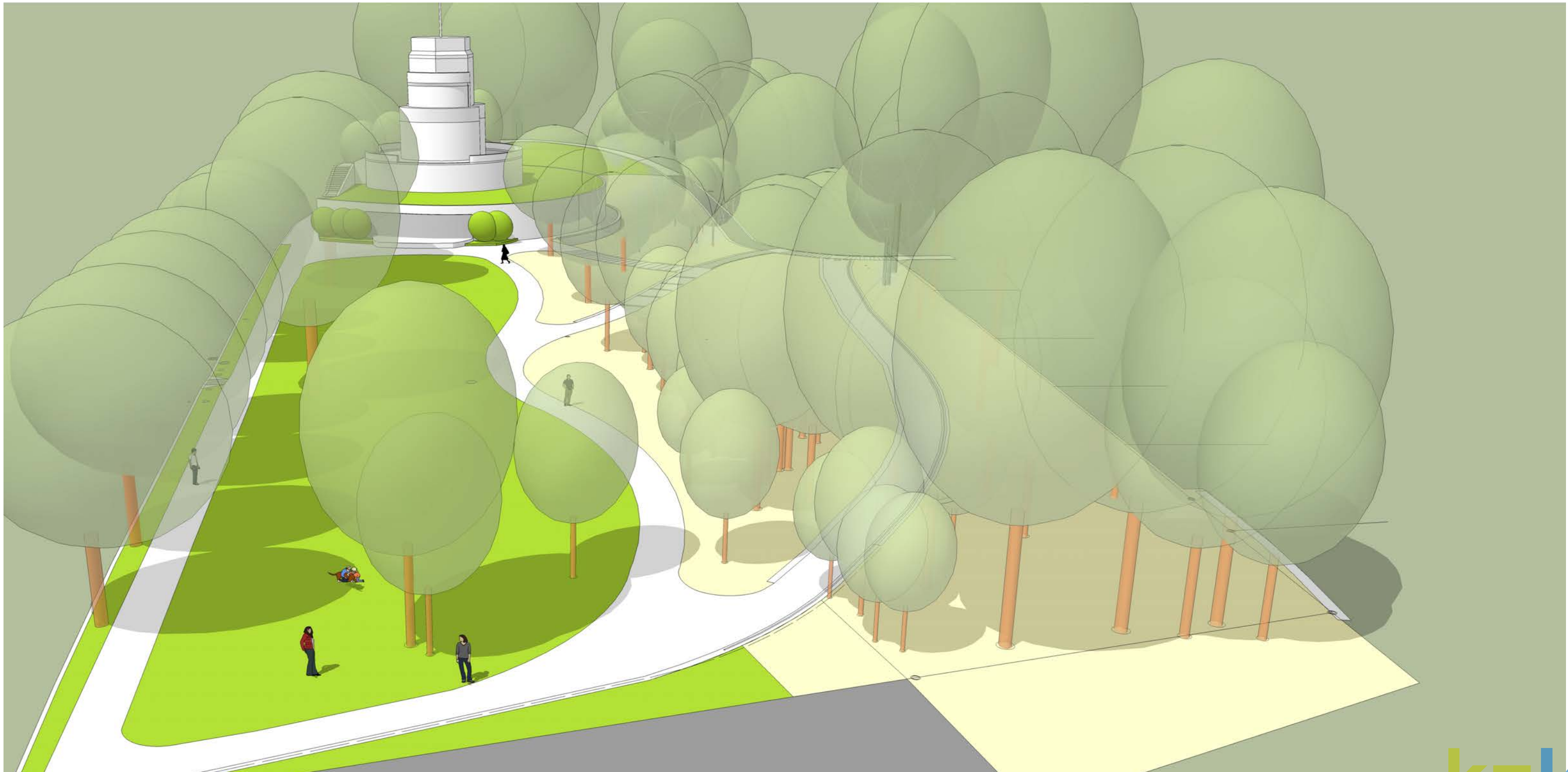
LANDSCAPE CONCEPTS - #1



PROSPECT HILL PARK

THE LAWN - OPTION #1

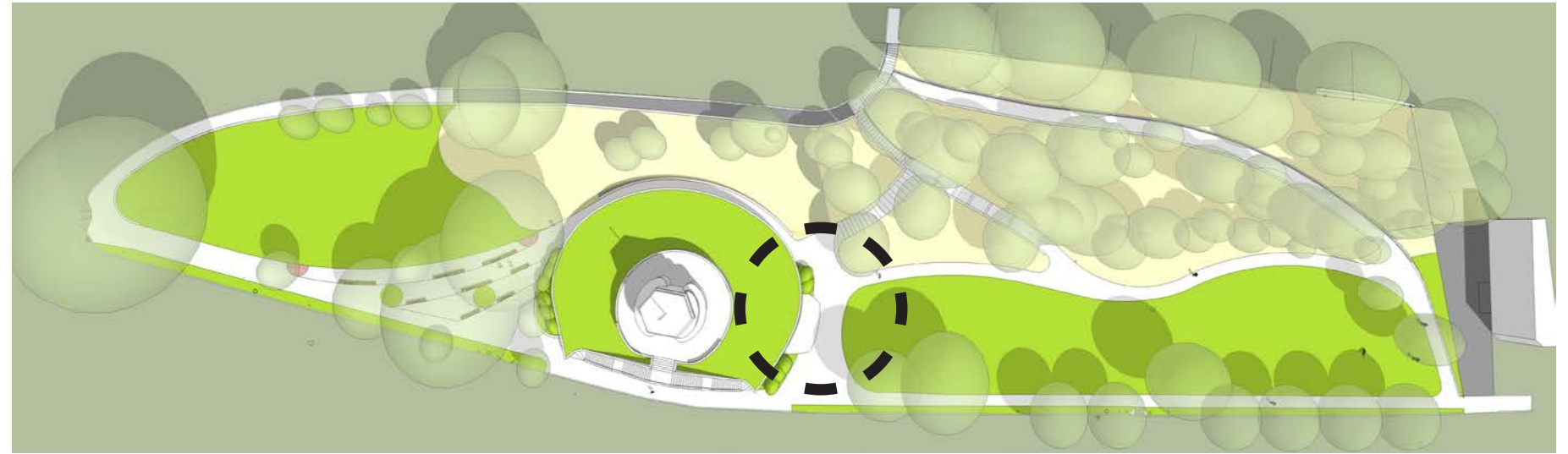
- Improves soil structure & health
- Adds irrigation system



PROSPECT HILL PARK

THE TOWER - OPTION #1

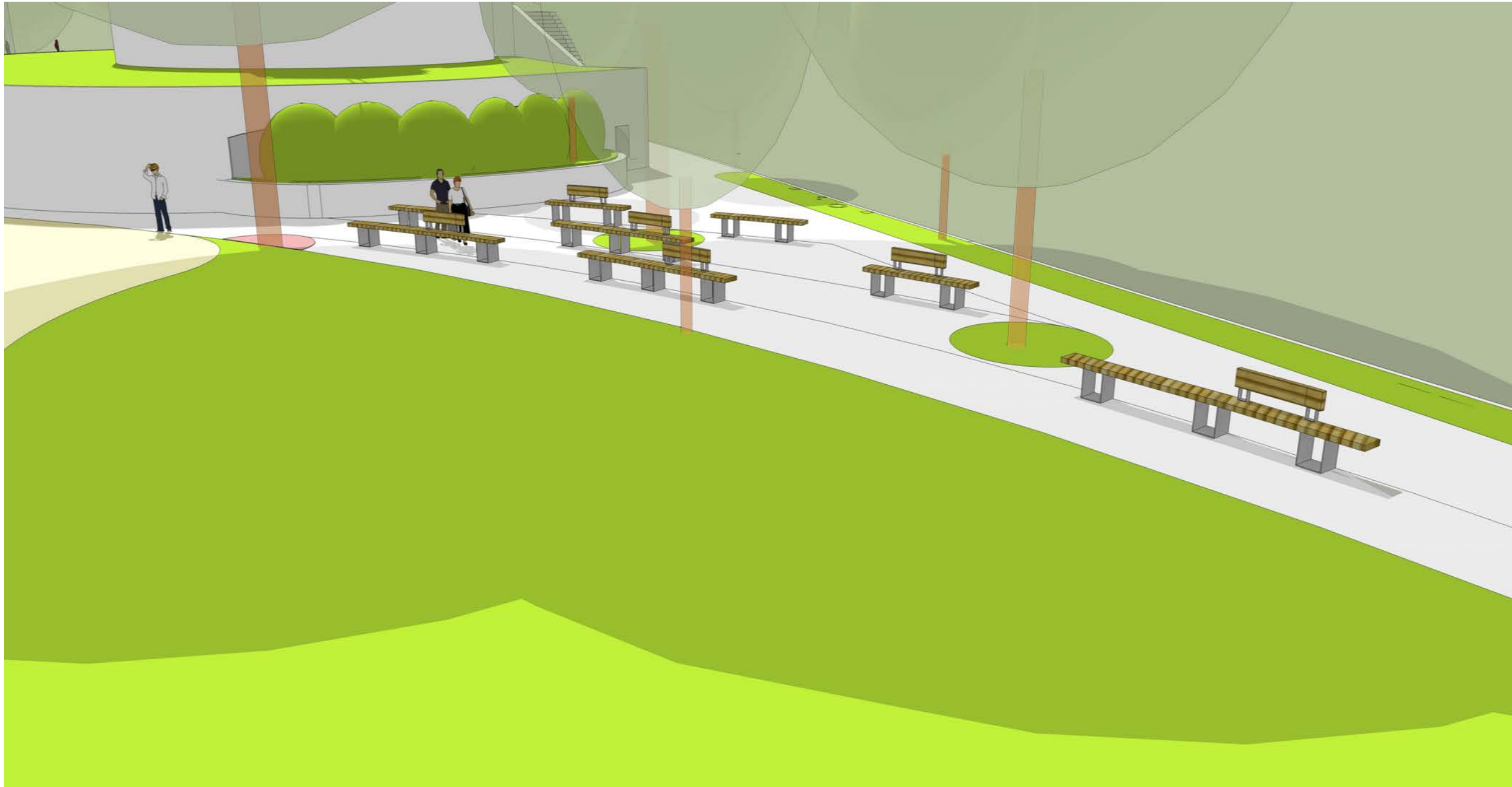
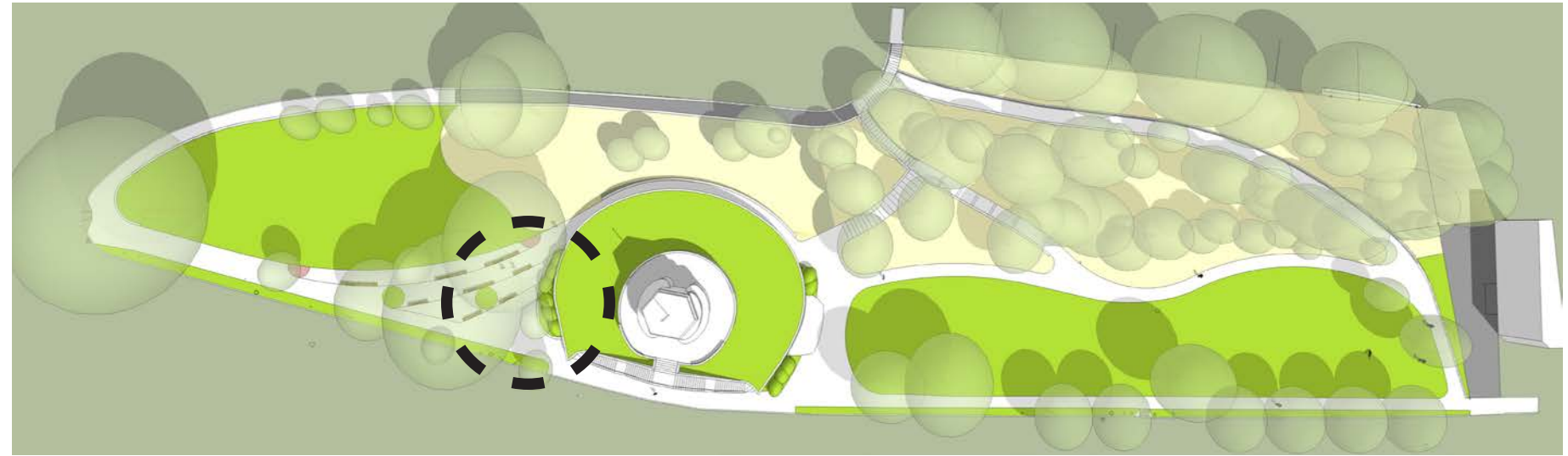
- Creates performance space
- Adds interpretive elements along wall



PROSPECT HILL PARK

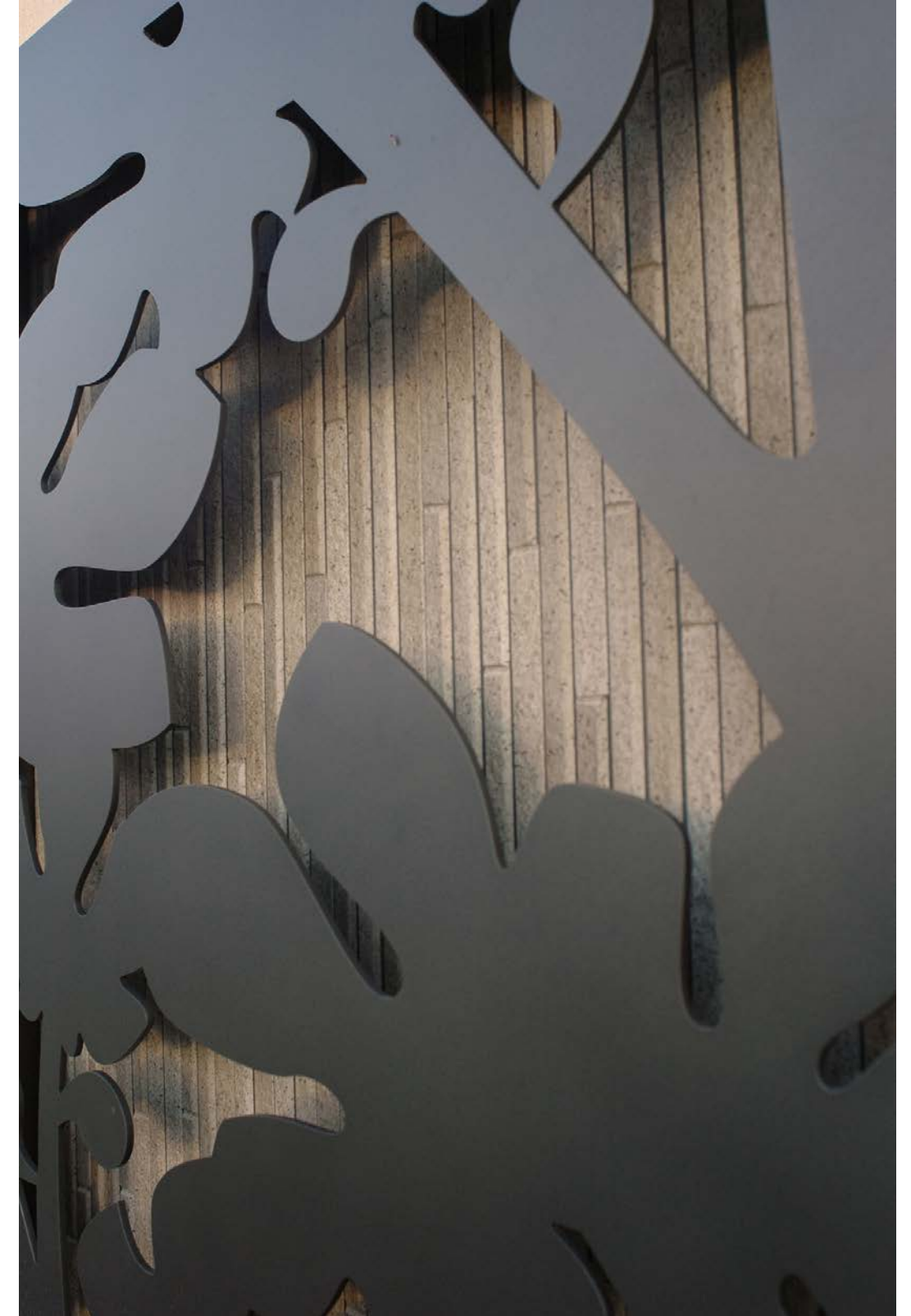
THE OVERLOOK - OPTION #1

- Passive overlook with shade & seating to enjoy views
- Retains existing trees



PROSPECT HILL PARK

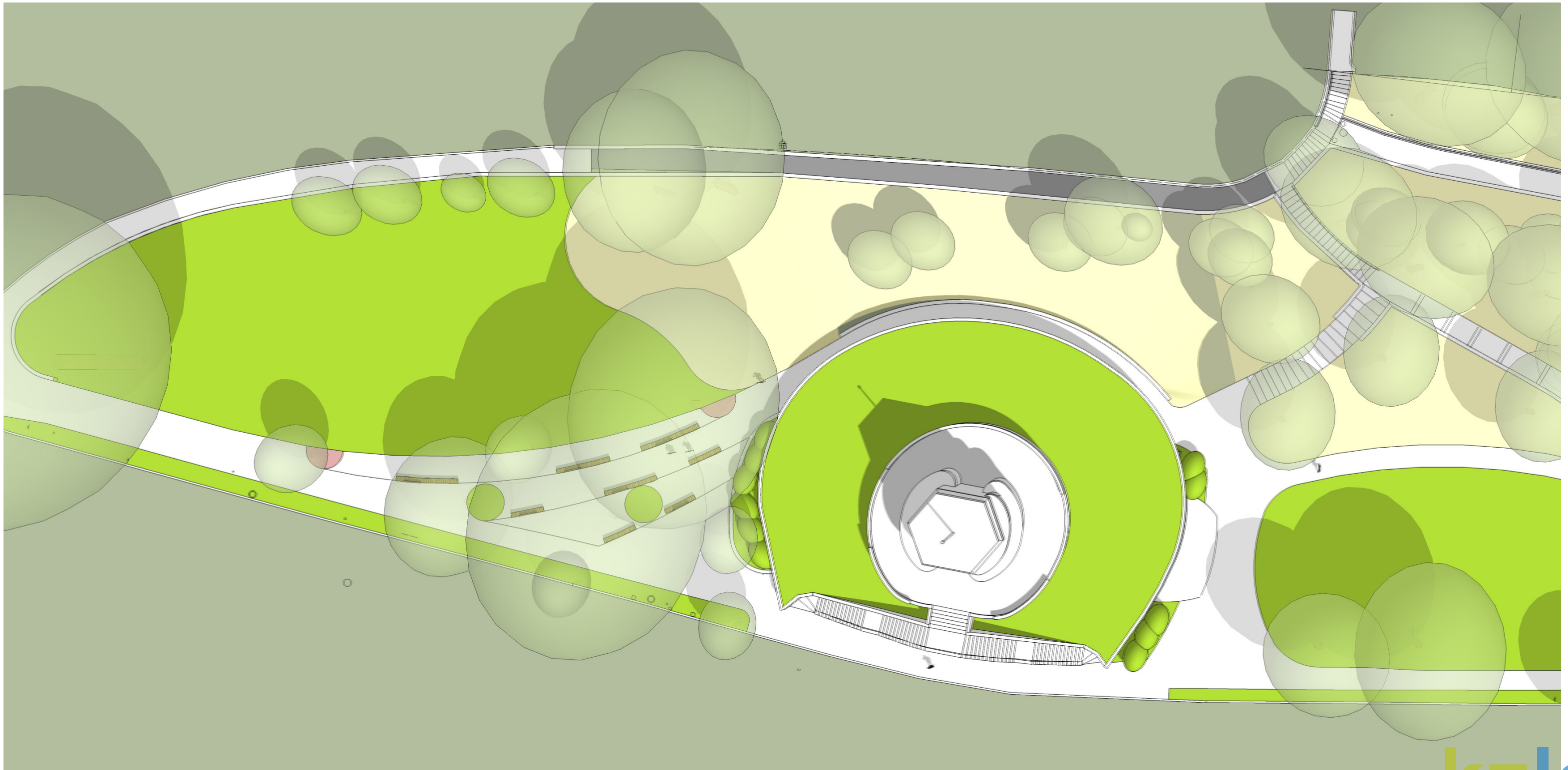
THE TOWER & OBSERVATORY - OPTION #1



PROSPECT HILL PARK

THE SLOPE - OPTION #1

- 1903-inspired planting
- Meadow-like planting



PROSPECT HILL PARK

THE SLOPE - OPTION #1



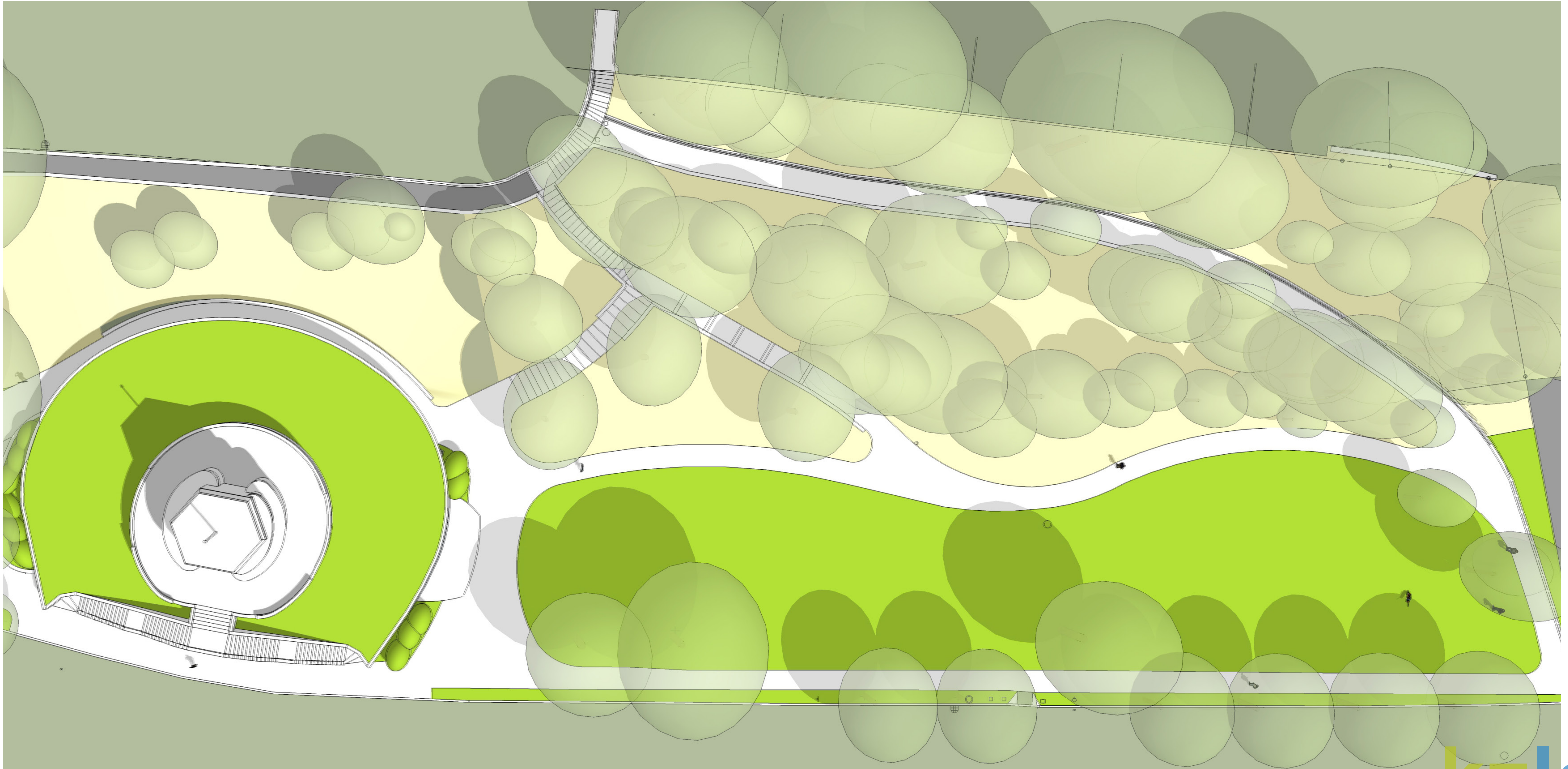
Meadow-like planting/turf alternatives



PROSPECT HILL PARK

THE WOODS - OPTION #1

- Removal of shed and non-historic walkway
- Restoration of woodland with herbaceous understory



PROSPECT HILL PARK

THE WOODS



- Selective clearing & pruning of trees
- Introduction of herbaceous understory



PROSPECT HILL PARK

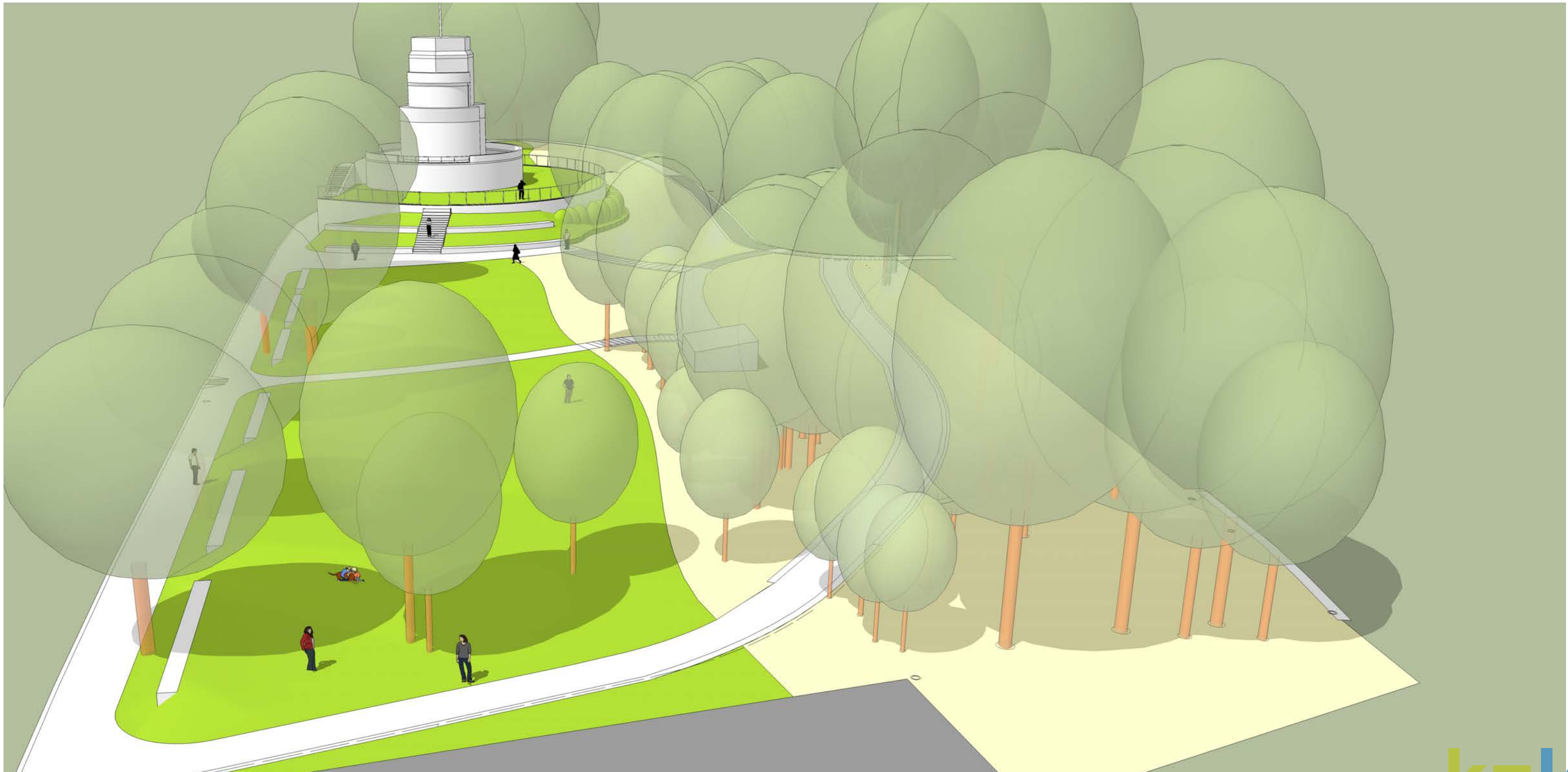
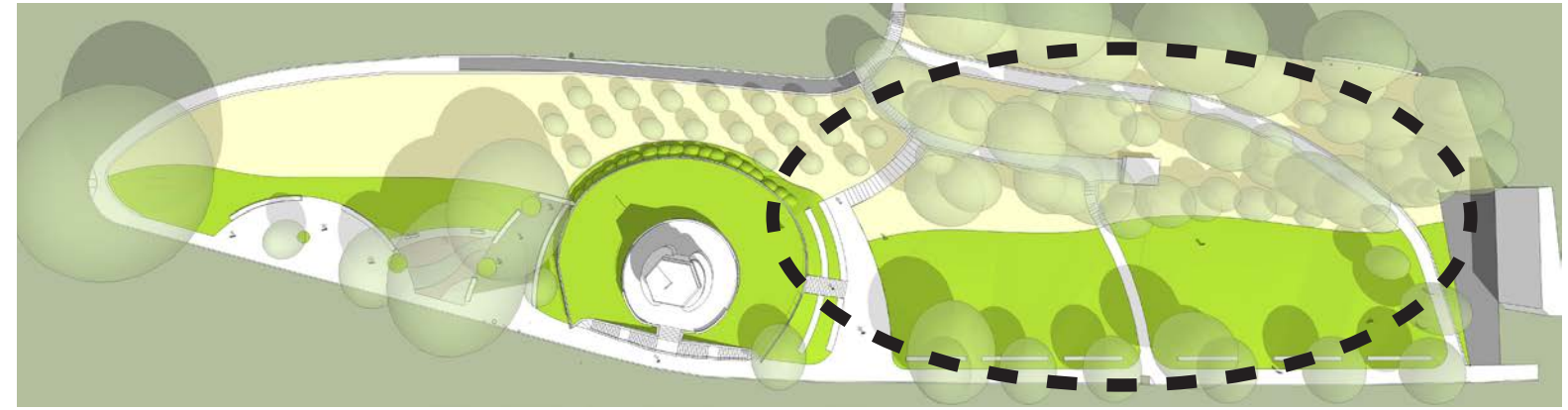
LANDSCAPE CONCEPTS - #2



PROSPECT HILL PARK

THE LAWN - OPTION #2

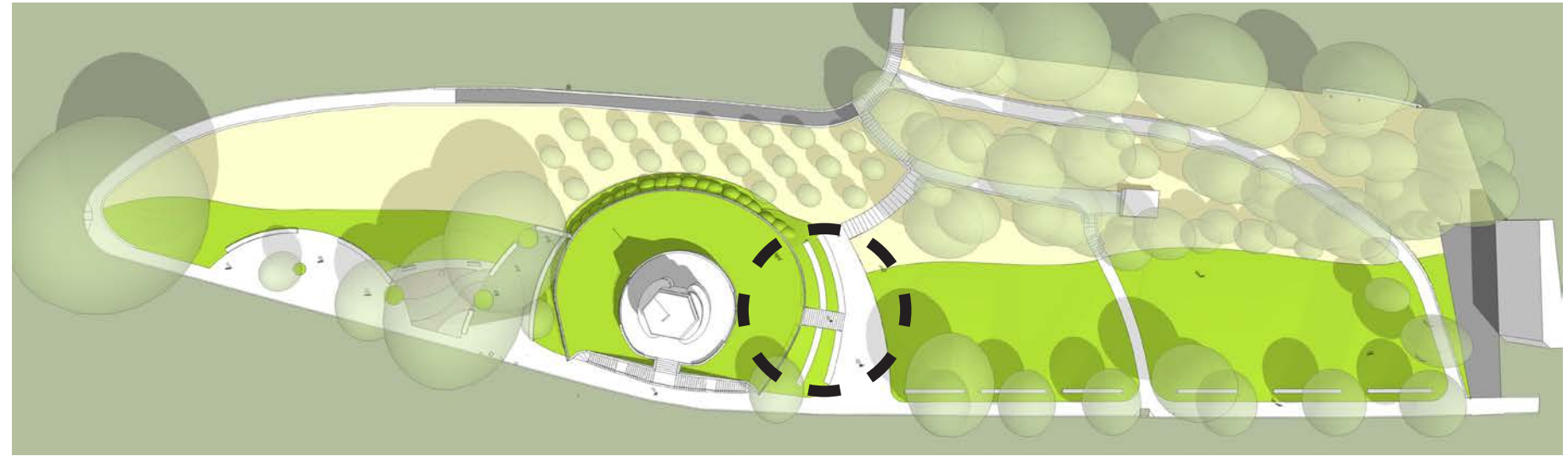
- Improves soil structure & health
- Adds irrigation system



PROSPECT HILL PARK

THE TOWER - OPTION #2

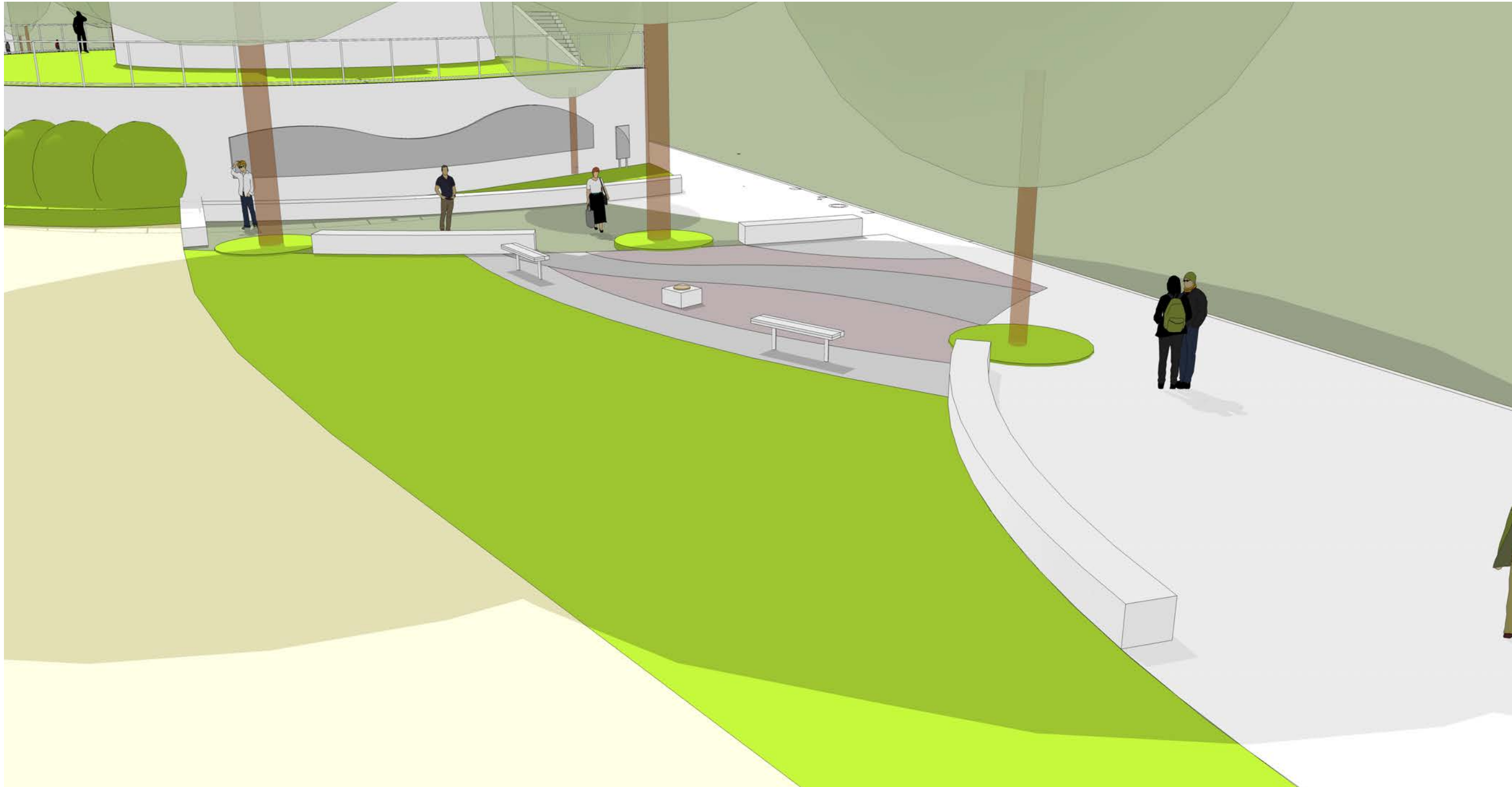
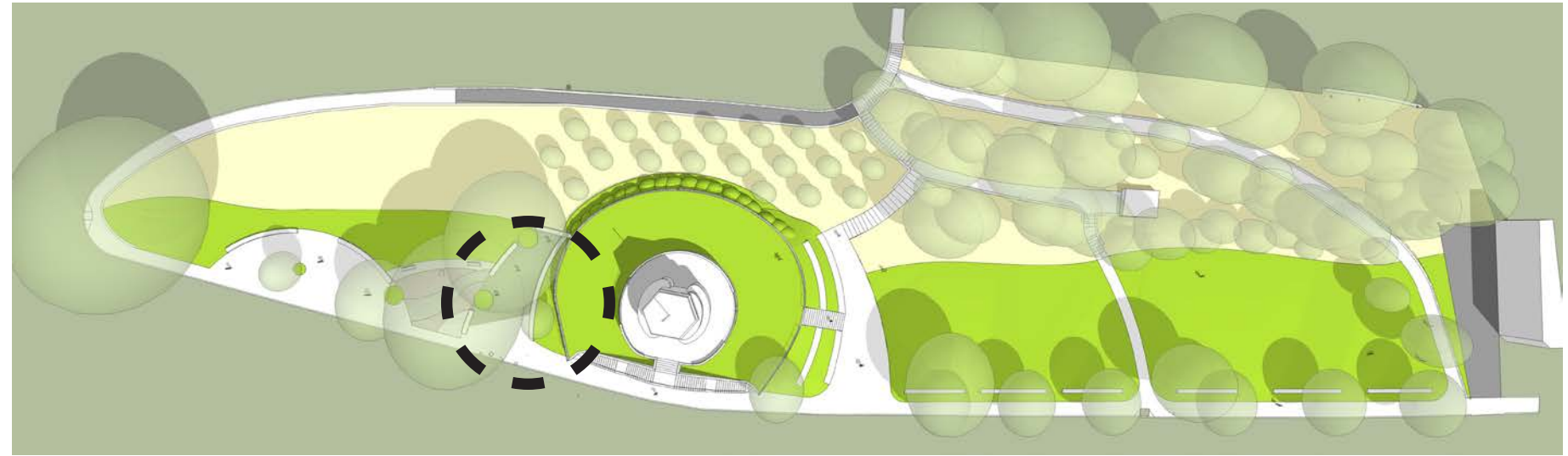
- Creates terraced seating
- Maintains existing central walkway



PROSPECT HILL PARK

THE OVERLOOK - OPTION #2

- Passive overlook with shade, seating & interpretation
- Retains existing trees



PROSPECT HILL PARK

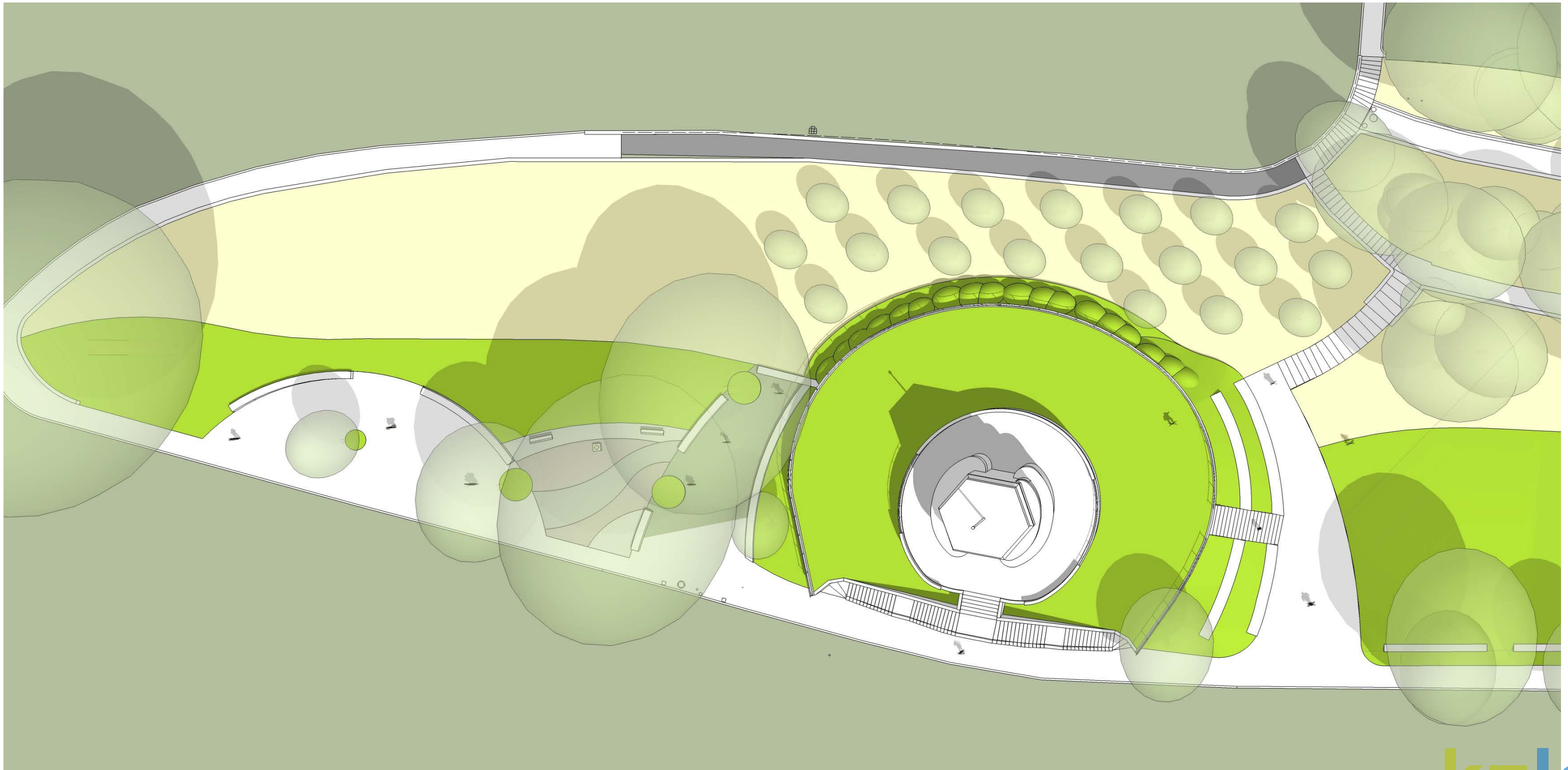
THE TOWER & OBSERVATORY - OPTION #2



PROSPECT HILL PARK

THE SLOPE - OPTION #2

- Expands tree planting with orchard
- Introduces fine fescue planting



PROSPECT HILL PARK

THE SLOPE - OPTION #2



“No mow” fine fescues

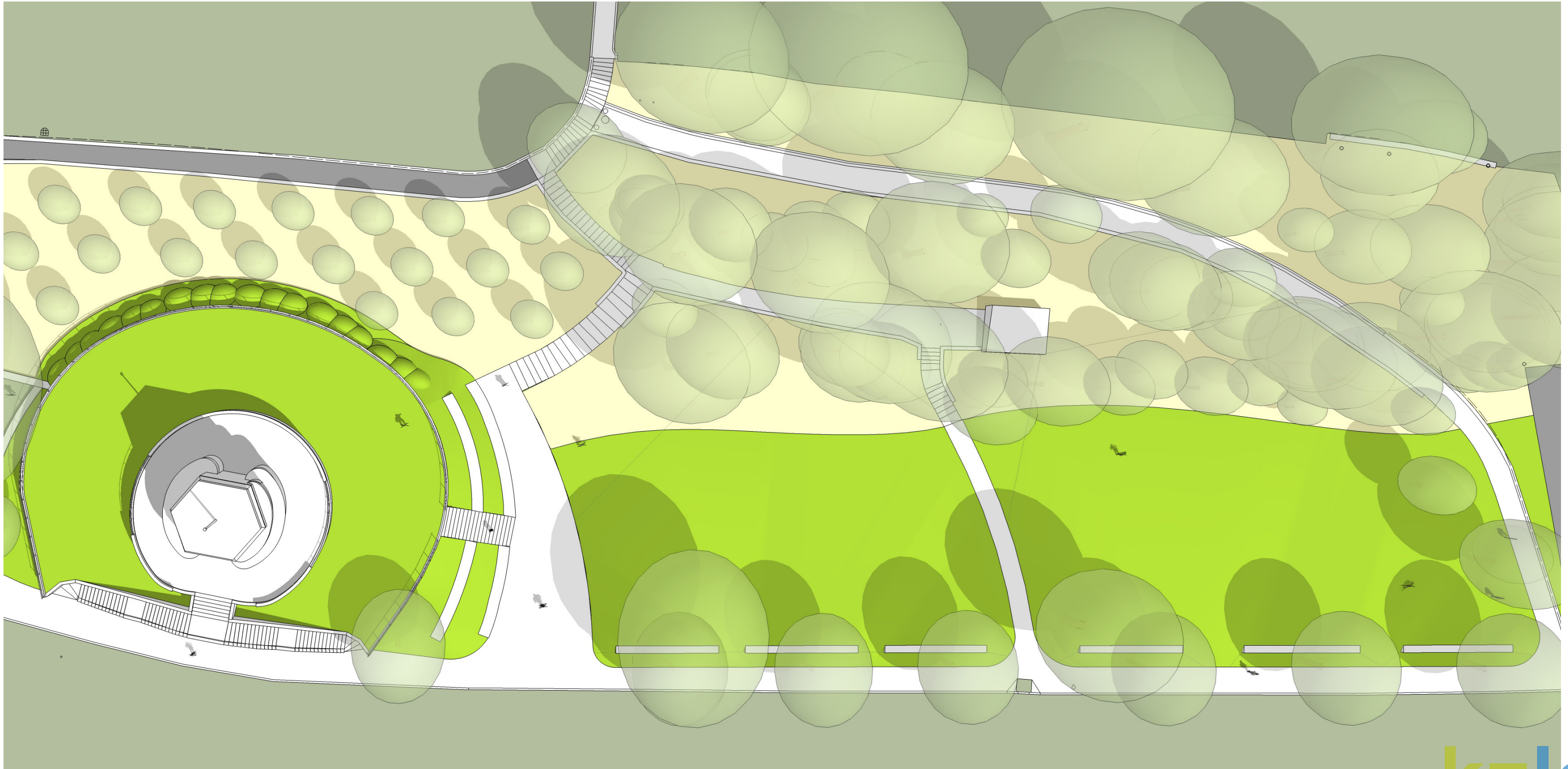


Crabapple planting

PROSPECT HILL PARK

THE WOODS - OPTION #2

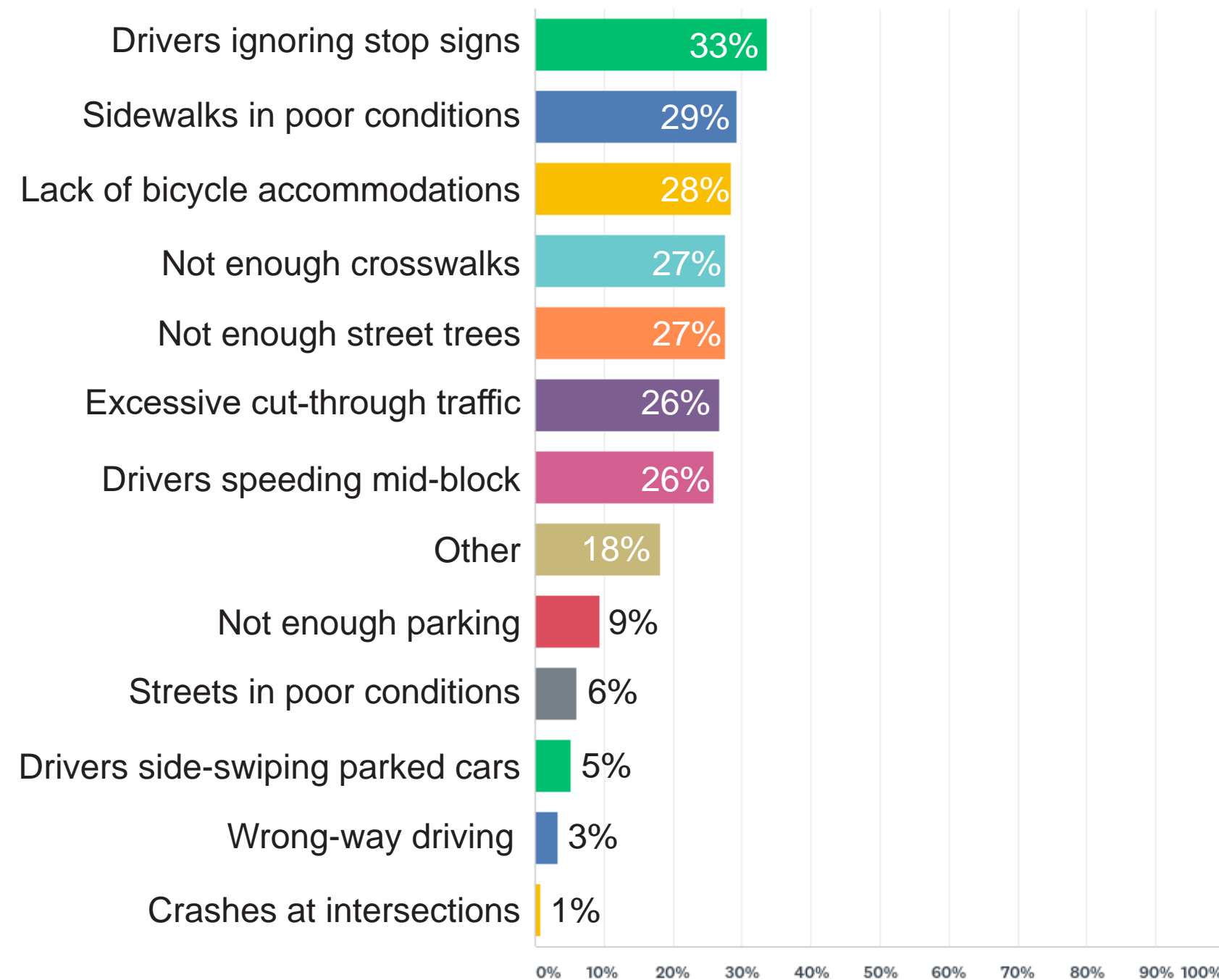
- Removal of non-historic walkway
- Restoration of woodland with herbaceous understory



PROSPECT HILL PARK

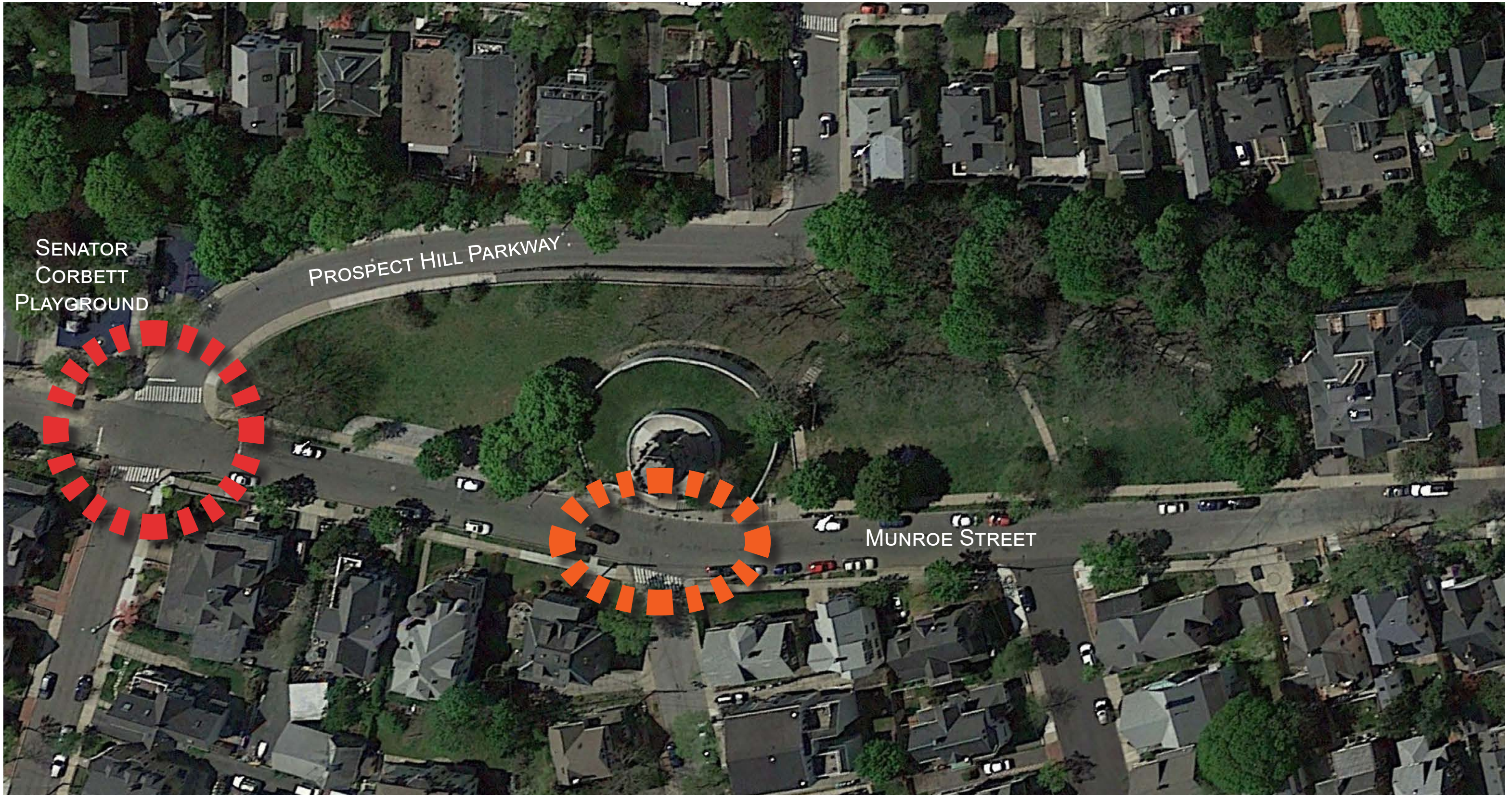
SURVEY FEEDBACK

9. What are your most pressing concerns related to traffic near Prospect Hill Park?



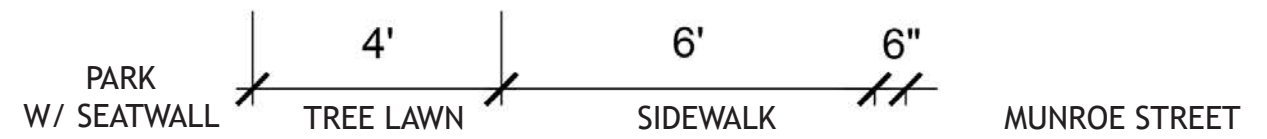
PROSPECT HILL PARK

TRAFFIC CALMING



PROSPECT HILL PARK

STREETSCAPE - OPTIONS



PROSPECT HILL PARK

TRAFFIC CALMING



Pinchpoint

- Adds green space and narrows roadway, even when cars aren't parked nearby.

PROSPECT HILL PARK

TRAFFIC CALMING



Pinchpoint with crosswalk

- Provides a legal crossing location to access the park, while also shortening the distance required to cross.
- May also provide opportunities to add green space.



PROSPECT HILL PARK

TRAFFIC CALMING



Curb extensions

- Shortens the distance required to cross at an intersection, while also slowing down turning vehicles.
- May also provide opportunities to add green space.

PROSPECT HILL PARK

EXISTING SITE LIGHTING



PROSPECT HILL PARK

SITE LIGHTING - OPTION #1



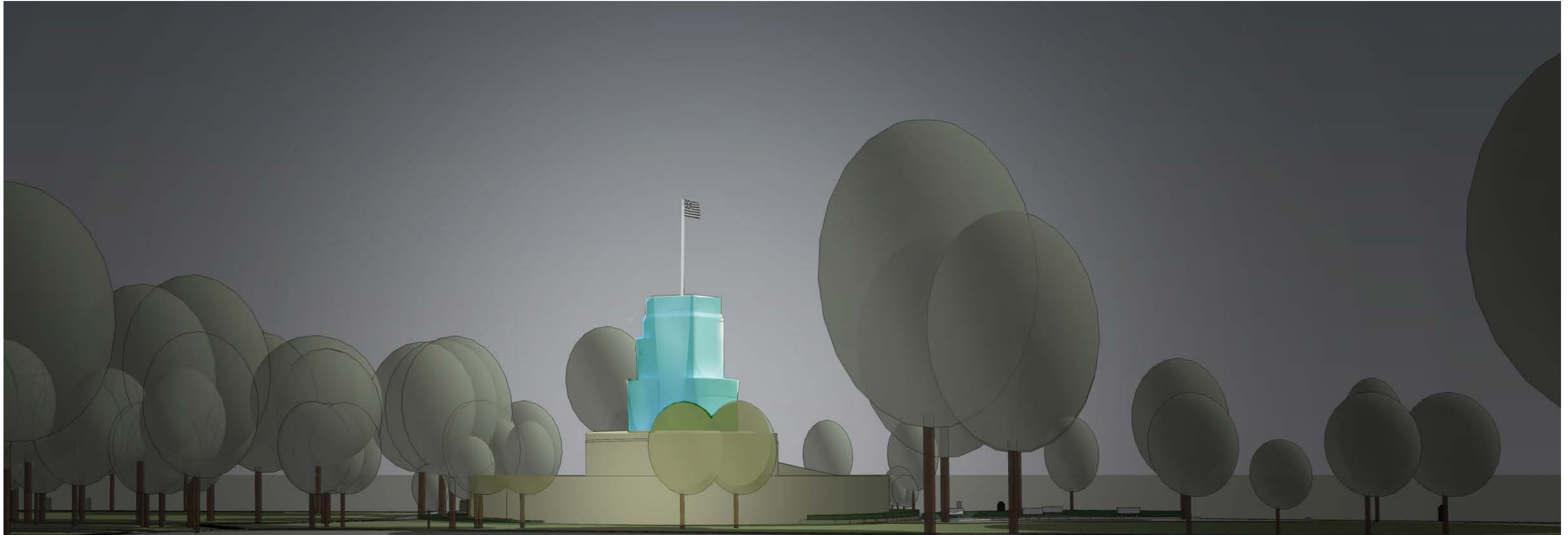
PROSPECT HILL PARK

SITE LIGHTING - OPTION #2



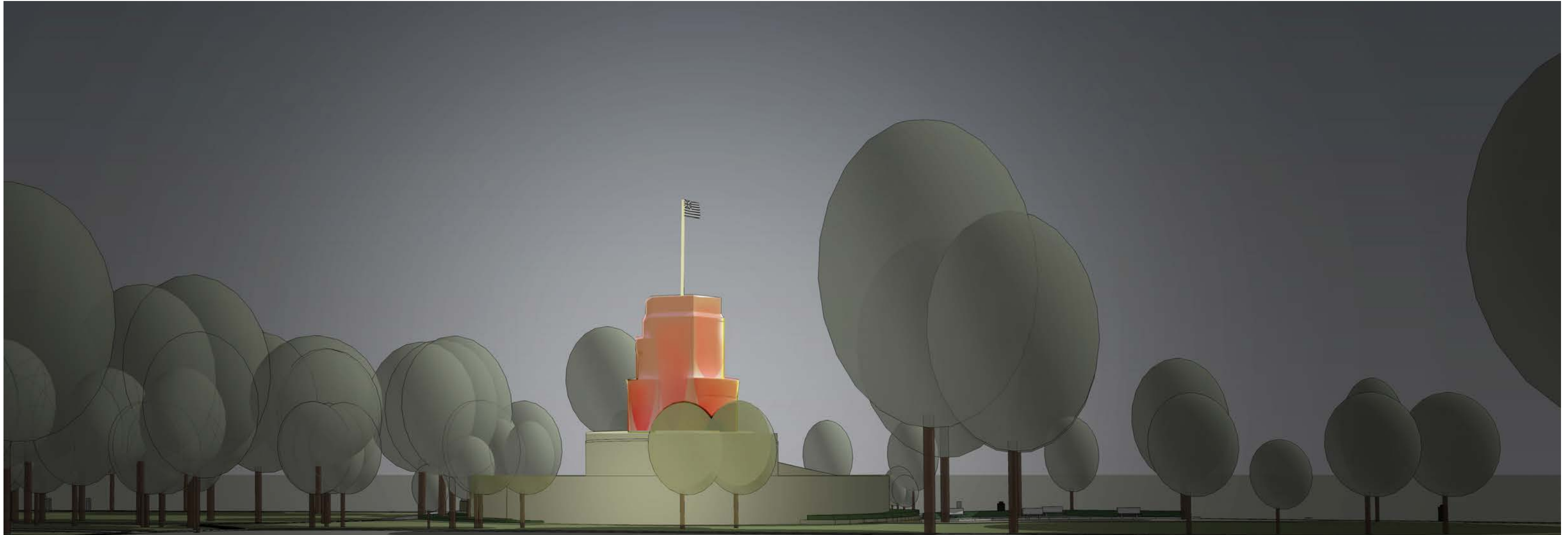
PROSPECT HILL PARK

TOWER LIGHTING



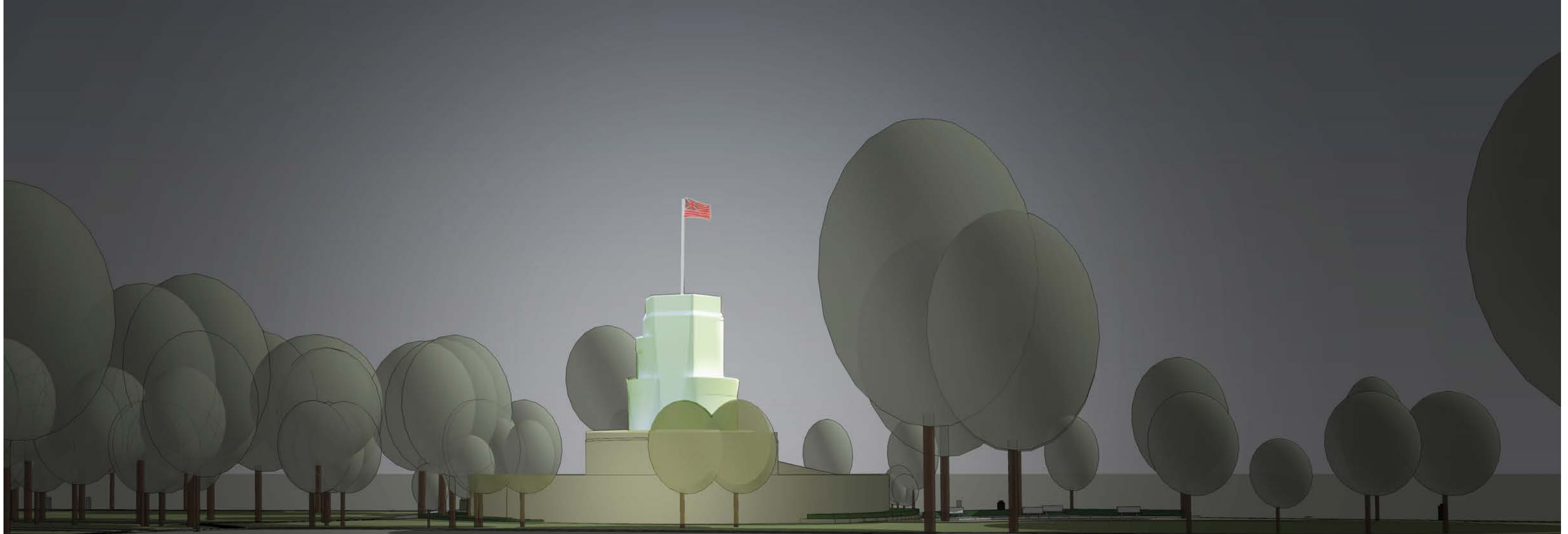
PROSPECT HILL PARK

TOWER LIGHTING



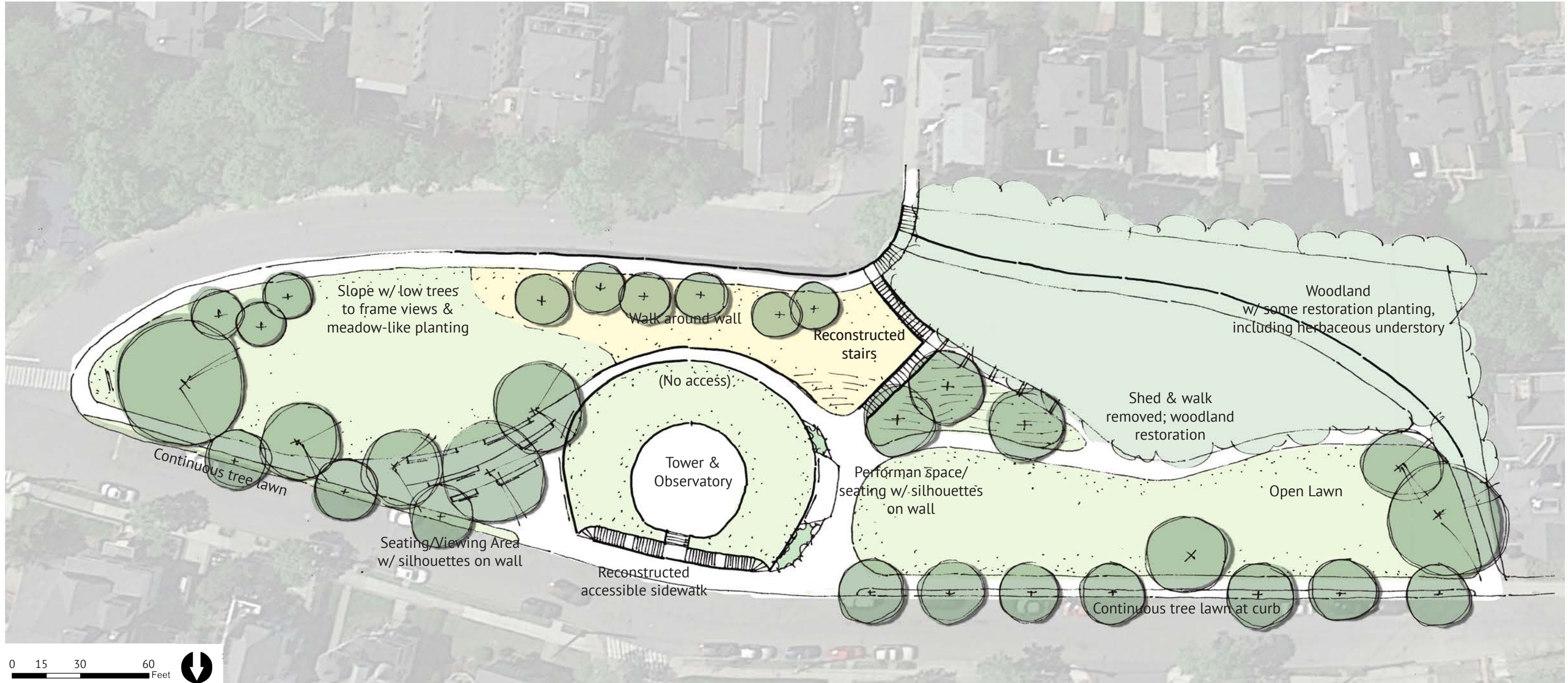
PROSPECT HILL PARK

TOWER LIGHTING



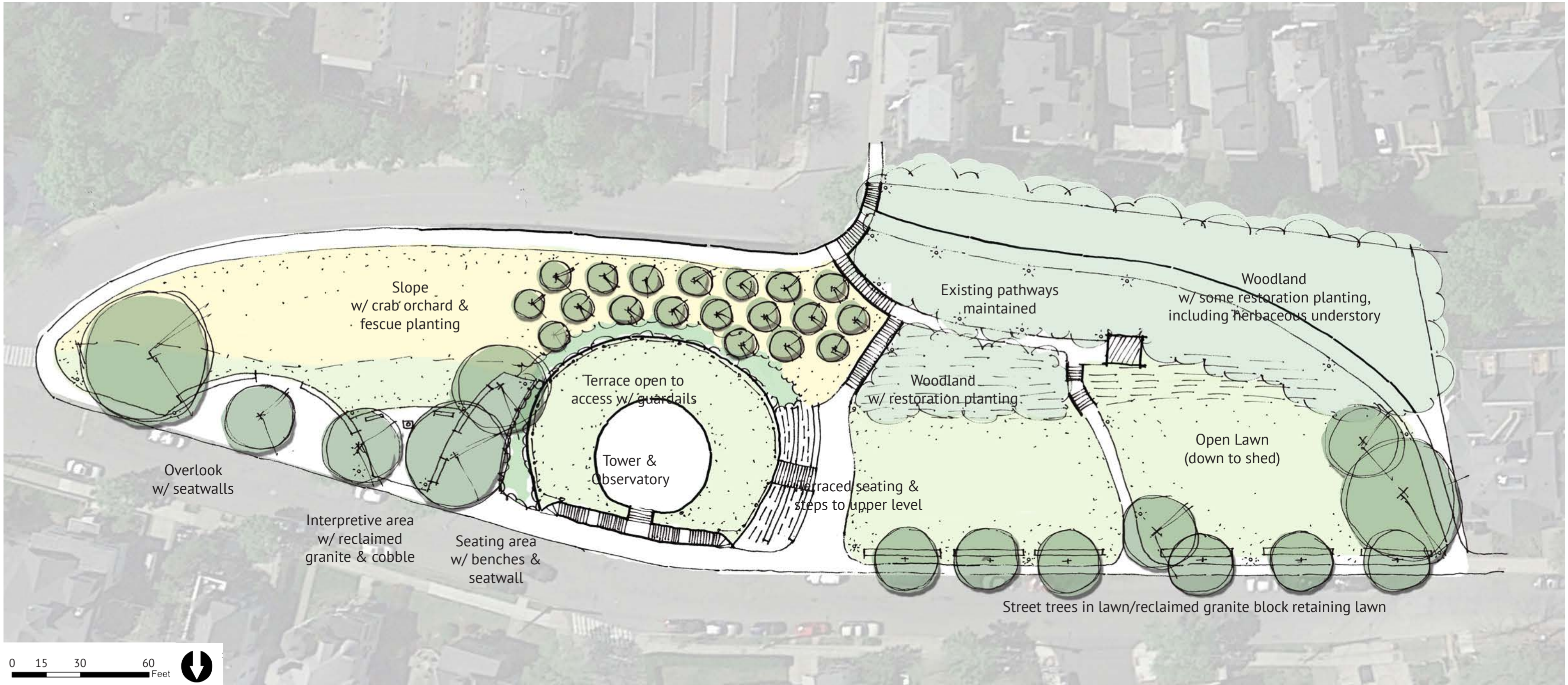
PROSPECT HILL PARK

SITE OPTION #1



PROSPECT HILL PARK

SITE OPTION #2



PROSPECT HILL PARK PROJECT TIMELINE

NOVEMBER 2017

- COMMUNITY MEETING #2
- SCHEMATIC DESIGN
- HISTORIC PRESERVATION COMMITTEE

DECEMBER

- COMMUNITY MEETING #3
- HISTORIC PRESERVATION COMMITTEE
- DESIGN DEVELOPMENT

JANUARY 2018

- COMMUNITY MEETING #4
- HISTORIC PRESERVATION COMMITTEE
- CONSTRUCTION DOCUMENTATION

FEBRUARY

- ADVERTISE FOR CONSTRUCTION BID

MARCH

APRIL

MAY

JUNE

- CONSTRUCTION MUST BEGIN JUNE 1,
LIKELY THROUGH SPRING 2019



kzla

Contact:

Luisa Oliveira, Project Manager
LOliveira@somervillema.gov
(617) 625-6600, ext 2529

Project updates:

[HTTPS://WWW.SOMERVILLEMA.GOV/PROSPECTHILLPARK](https://www.somervillema.gov/prospecthillpark)