

# PROSPECT HILL PARK REHABILITATION TREE INFORMATION

**TO REVIEW THE FIVE COMMUNITY MEETINGS THAT WERE HELD, PLEASE VISIT :**

**<https://www.somervillema.gov/prospecthillpark>**

**THERE WILL BE A 6TH COMMUNITY MEETING TO DISCUSS  
TREES & LANDSCAPE MANAMEGEMNT IN JANUARY, 2019**

**FOR ADDITIONAL QUESTIONS, CONTACT:  
LUISA OLIVEIRA, SENIOR PLANNER FOR LANDSCAPE DESIGN  
LOLIVEIRA@SOMERVILLEMA.GOV**

# PROSPECT HILL PARK TREE PROFILE

PER CITY ARBORIST'S DRAFT TREE INVENTORY\*:

**134 TOTAL TREES**

**105 TREES ARE INVASIVE SPECIES IN MA**

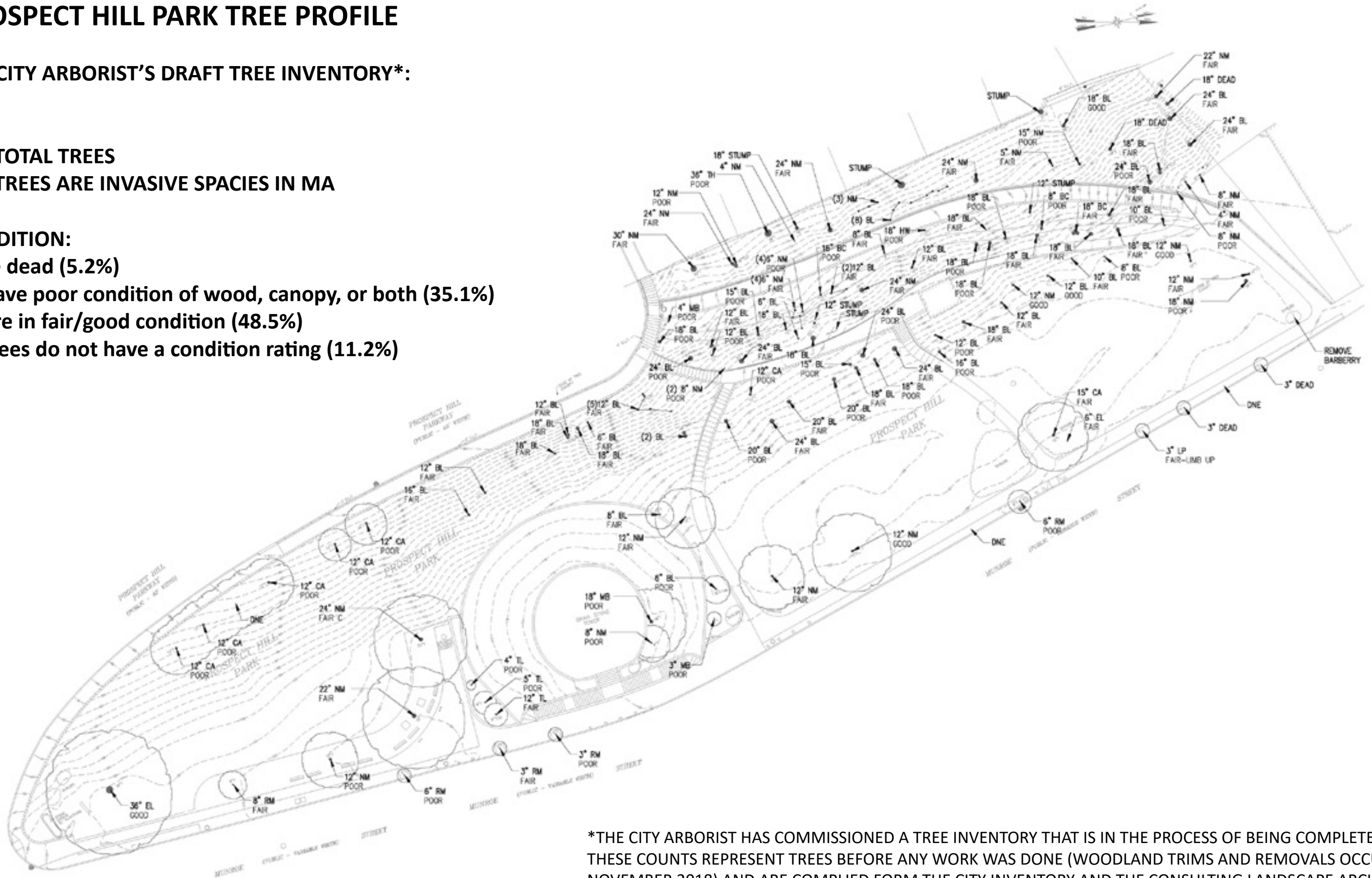
## CONDITION:

**7 are dead (5.2%)**

**47 have poor condition of wood, canopy, or both (35.1%)**

**65 are in fair/good condition (48.5%)**

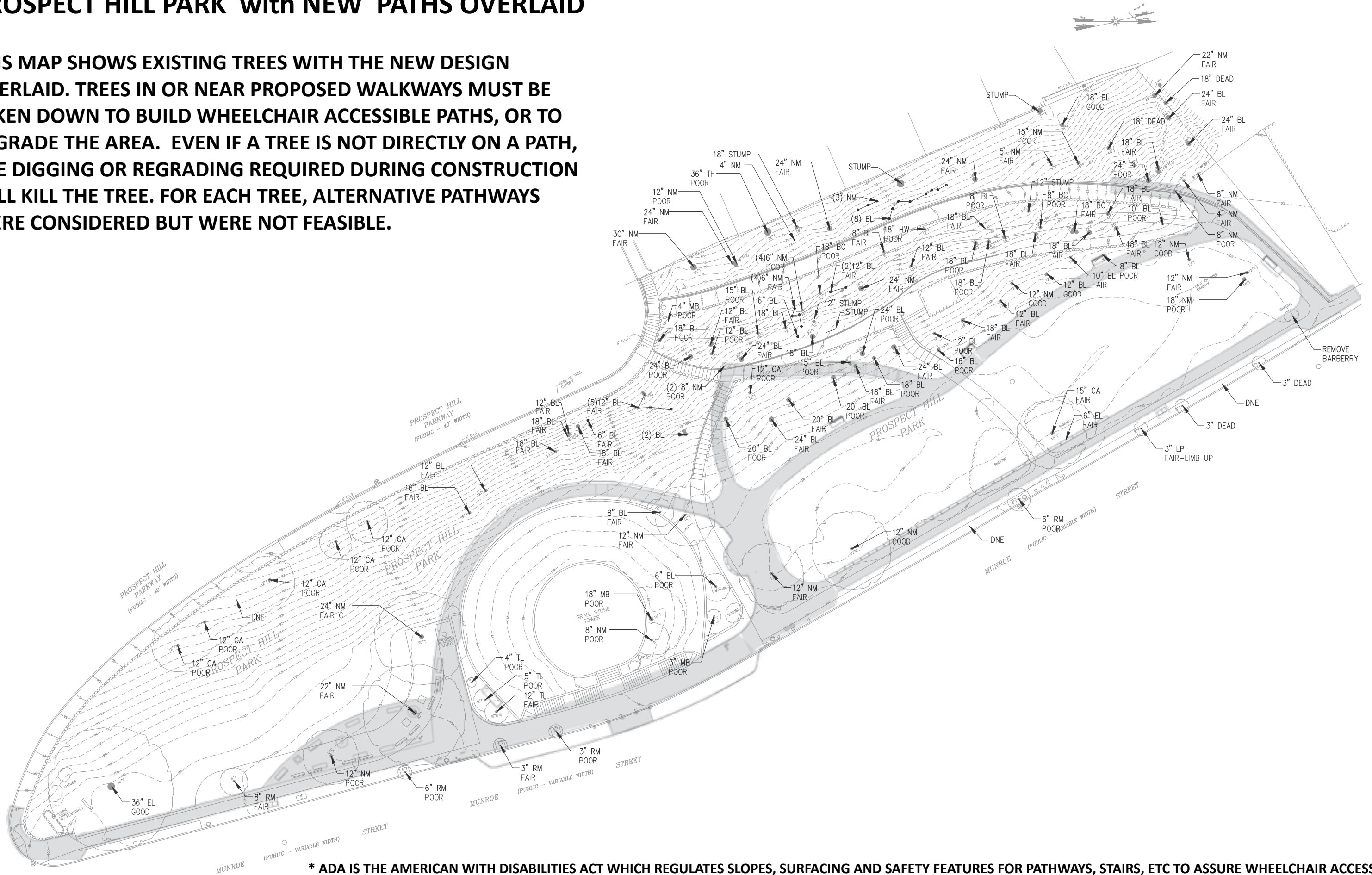
**15 trees do not have a condition rating (11.2%)**



\*THE CITY ARBORIST HAS COMMISSIONED A TREE INVENTORY THAT IS IN THE PROCESS OF BEING COMPLETED. THESE COUNTS REPRESENT TREES BEFORE ANY WORK WAS DONE (WOODLAND TRIMS AND REMOVALS OCCURED IN NOVEMBER 2018) AND ARE COMPILED FORM THE CITY INVENTORY AND THE CONSULTING LANDSCAPE ARCHITECT'S DATA. EACH TREE REMOVED OR TO BE REMOVED WAS ASSESSED AND FIELD VERIFIED.

# PROSPECT HILL PARK with NEW PATHS OVERLAID

**THIS MAP SHOWS EXISTING TREES WITH THE NEW DESIGN OVERLAID. TREES IN OR NEAR PROPOSED WALKWAYS MUST BE TAKEN DOWN TO BUILD WHEELCHAIR ACCESSIBLE PATHS, OR TO REGRADE THE AREA. EVEN IF A TREE IS NOT DIRECTLY ON A PATH, THE DIGGING OR REGRADING REQUIRED DURING CONSTRUCTION WILL KILL THE TREE. FOR EACH TREE, ALTERNATIVE PATHWAYS WERE CONSIDERED BUT WERE NOT FEASIBLE.**



**\* ADA IS THE AMERICAN WITH DISABILITIES ACT WHICH REGULATES SLOPES, SURFACING AND SAFETY FEATURES FOR PATHWAYS, STAIRS, ETC TO ASSURE WHEELCHAIR ACCESSIBILITY**



# PROSPECT HILL PARK TREE REMOVAL MAP

**DEAD: 7 TREES**

**POOR CONDITION: 20 TREES**

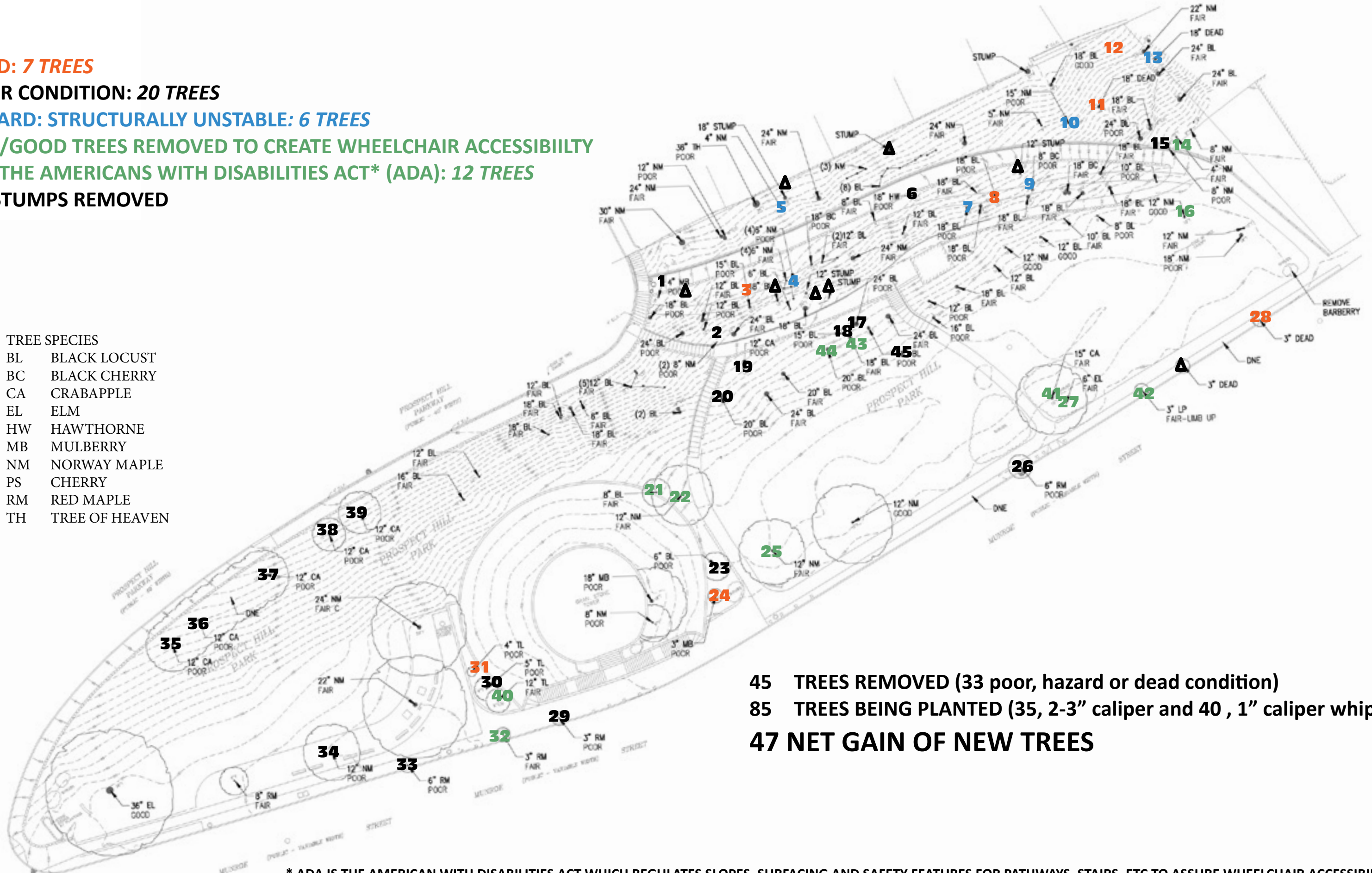
**HAZARD: STRUCTURALLY UNSTABLE: 6 TREES**

**FAIR/GOOD TREES REMOVED TO CREATE WHEELCHAIR ACCESSIBILITY PER THE AMERICANS WITH DISABILITIES ACT\* (ADA): 12 TREES**

**▲ 6 STUMPS REMOVED**

## TREE SPECIES

- BL BLACK LOCUST
- BC BLACK CHERRY
- CA CRABAPPLE
- EL ELM
- HW HAWTHORNE
- MB MULBERRY
- NM NORWAY MAPLE
- PS CHERRY
- RM RED MAPLE
- TH TREE OF HEAVEN

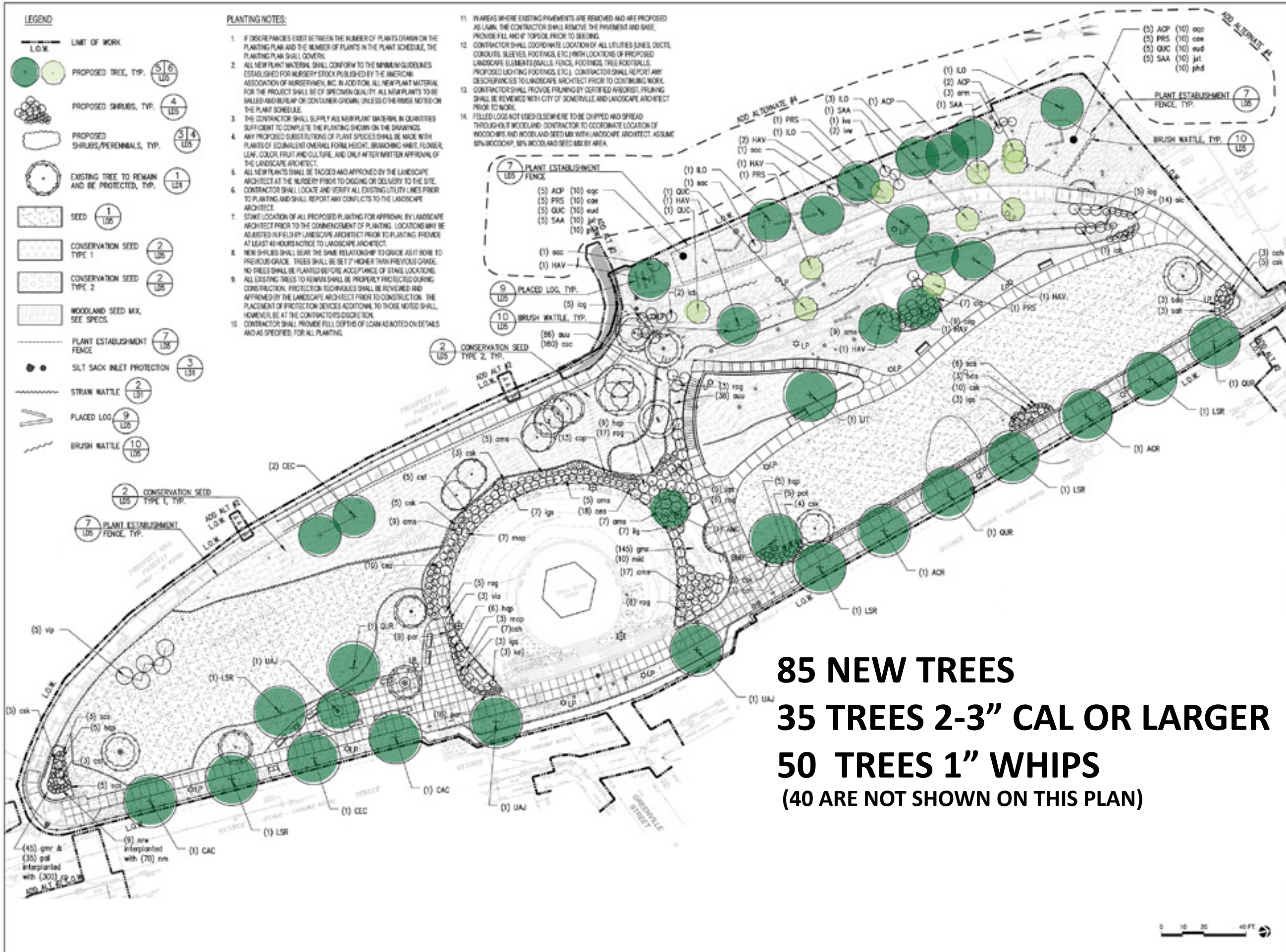


**45 TREES REMOVED (33 poor, hazard or dead condition)**  
**85 TREES BEING PLANTED (35, 2-3" caliper and 40, 1" caliper whips)**  
**47 NET GAIN OF NEW TREES**

\* ADA IS THE AMERICAN WITH DISABILITIES ACT WHICH REGULATES SLOPES, SURFACING AND SAFETY FEATURES FOR PATHWAYS, STAIRS, ETC TO ASSURE WHEELCHAIR ACCESSIBILITY



# PROSPECT HILL PARK TREE PLANTING MAP



**SOMERVILLE  
PROSPECT HILL PARK  
REHABILITATION**

SOMERVILLE, MASSACHUSETTS  
CITY OF SOMERVILLE

NO.	REVISION	DATE

**kzla**  
KYLE ZOR LANDSCAPE ARCHITECTURE, INC.  
35 BENTLEY STREET SUITE 202  
SOMERVILLE, MA 01906  
978-451-1018 FAX  
WWW.KZLA.COM



100% CONSTRUCTION DOCUMENTS

Job Number:  
Project: PROSPECT HILL PARK REHABILITATION  
Drawn By: T11      Checked By: KZ  
Date: JUNE 13, 2018  
Scale: 1" = 20'-0"  
Drawing Title:

PLANTING PLAN:  
ADD-ALTERNATE #4 PLANTING PLAN

**85 NEW TREES**  
**35 TREES 2-3" CAL OR LARGER**  
**50 TREES 1" WHIPS**  
**(40 ARE NOT SHOWN ON THIS PLAN)**